

# Active Recombinant Full Length Human EEF2K Protein, GST-tagged

**Cat. No.** EEF2K-2907HF    **Lot. No.** (See product label)

## SPECIFICATION

<b>Product Overview</b>	Full-length human EEF2K [1-725(end) amino acids of accession number NP_037434.1] was expressed as N-terminal GST-fusion protein (109 kDa) using E. coli expression system. GST-EEF2K was purified by using glutathione sepharose chromatography.
<b>Species</b>	Human
<b>Source</b>	E.coli
<b>ProteinLength</b>	1-725
<b>Form</b>	50 mM Tris-HCl, 150 mM NaCl, 0.05% Brij35, 1 mM DTT, 10% glycerol, pH7.5
<b>Bio-activity</b>	The activity was measured by off-chip mobility shift assay. The enzyme was incubated with fluorescence-labeled substrate, Mg(or Mn)/ATP, and Ca/Calmodulin . The phosphorylated and unphosphorylated substrates were separated and detected by LabChip <sup>™</sup> 3000.
<b>Purity</b>	81%
<b>Applications</b>	SDS-PAGE
<b>Storage</b>	Store at -80C. Avoid repeating freeze-thaws.

 Tel: 1-631-559-9269    1-516-512-3133

 Email: [info@creative-biomart.com](mailto:info@creative-biomart.com)     Fax: 1-631-938-8127

 45-1 Ramsey Road, Shirley, NY 11967, USA

## GENE INFORMATION

**Gene Name** eukaryotic elongation factor-2 kinase

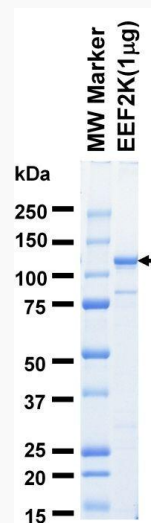
**Official Symbol** EEF2K

**Synonyms** EEF2K;CaMKIII;HSU93850;eEF-2K

**Protein Refseq** [NP\\_037434.1](#)

**UniProt ID** [O00418](#)

### SDS-PAGE

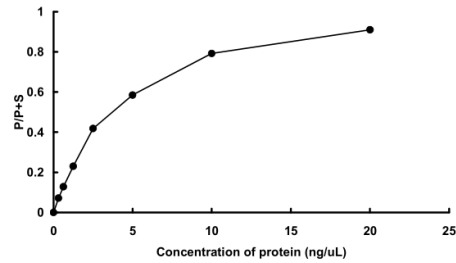


The purity was assessed by SDS-PAGE/CBB staining.

 Tel: 1-631-559-9269 1-516-512-3133

 Email: [info@creative-biomart.com](mailto:info@creative-biomart.com)  Fax: 1-631-938-8127

 45-1 Ramsey Road, Shirley, NY 11967, USA

**Activity data****Activity data**

The activity was measured by off-chip mobility shift assay. The enzyme was incubated with fluorescence-labeled substrate, Mg(or Mn)/ATP, and Ca/Calmodulin . The phosphorylated and unphosphorylated substrates were separated and detected by LabChip™3000.

 Tel: 1-631-559-9269 1-516-512-3133

 Email: [info@creative-biomart.com](mailto:info@creative-biomart.com)  Fax: 1-631-938-8127

 45-1 Ramsey Road, Shirley, NY 11967, USA