

## Recombinant Human EEPD1 Protein, GST-tagged

Cat. No. EEPD1-3078H Lot. No. (See product label)

### SPECIFICATION

<b>Product Overview</b>	Human EEPD1 full-length ORF ( AAH65518.1, 1 a.a. - 569 a.a.) recombinant protein with GST-tag at N-terminal.
<b>Species</b>	Human
<b>Source</b>	Wheat Germ
<b>Description</b>	EEPD1 (Endonuclease/Exonuclease/Phosphatase Family Domain Containing 1) is a Protein Coding gene.
<b>Molecular Mass</b>	88.8 kDa
<b>AA Sequence</b>	<p>MGSTLGCHR SIPRDP SDSL SHSRKFSAACNFSN ILVNQERLNINTATEEELMTLPGVT  RAVAR SIVEYREYIGGFKKVEDLALVSGVGATKLEQVKFEICVSSKGS SAQHSPSSL  RRDLLAEQQPHHLATAVPLTPRVNINTATPAQLMSVRGLSEKMALSIVDFRREHGPF  RSVEDLVRMDGINAAFLDRIRHQVFAERSRPPSTHTNGGLTFTAKPHPSPTSLSLQS  EDLDLPPGGPTQIISTRPSVEAFGGTRDGRPVLRRLATWNLQGCSVEKANNPGVREV  VCMTLLENSIKLLAVQELLDREALEKFCTELNQP TLPNIRKWKGPRGCWKAVVAEKP  SNQLQKGAGYAGFLWDAAAGMELRDAGSQESSPSNGHGKLAGPSPYLGRFKVGS  HDLTLVNLHLAALTLLGSENPSKNHSDGHR LASFAQTLQETLKGEKDVIILGDFGQGP  DSNDYDILRKEKFHHLIPAHTFTNISTKNPQGS KSLDNIWISKSLKKVFTGHWAVVRE  GLTNPWIPDNWSWGGVASEHCPVLAEFYTEKDWSKKDAPRNGSGVALERSEANIK  HER</p>
<b>Applications</b>	Enzyme-linked Immunoabsorbent Assay

 Tel: 1-631-559-9269 1-516-512-3133

 Email: [info@creative-biomart.com](mailto:info@creative-biomart.com)  Fax: 1-631-938-8127

 45-1 Ramsey Road, Shirley, NY 11967, USA

Western Blot (Recombinant protein)  
 Antibody Production  
 Protein Array

<b>Notes</b>	Best use within three months from the date of receipt of this protein.
<b>Storage</b>	Store at -80 centigrade. Aliquot to avoid repeated freezing and thawing.
<b>Storage Buffer</b>	50 mM Tris-HCl, 10 mM reduced Glutathione, pH=8.0 in the elution buffer.

## GENE INFORMATION

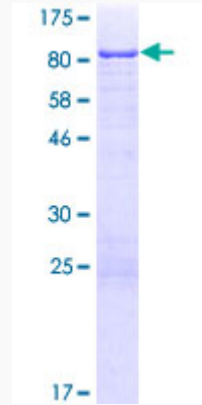
<b>Gene Name</b>	EEPD1 endonuclease/exonuclease/phosphatase family domain containing 1 [ Homo sapiens ]
<b>Official Symbol</b>	EEPD1
<b>Synonyms</b>	endonuclease/exonuclease/phosphatase family domain containing 1; 22223; Ensembl:ENSG00000122547; KIAA1706; endonuclease/exonuclease/phosphatase family domain-containing protein 1; HSPC107
<b>Gene ID</b>	80820
<b>mRNA Refseq</b>	NM_030636
<b>Protein Refseq</b>	NP_085139
<b>MIM</b>	617192
<b>UniProt ID</b>	Q7L9B9

 Tel: 1-631-559-9269 1-516-512-3133

 Email: [info@creative-biomart.com](mailto:info@creative-biomart.com)  Fax: 1-631-938-8127

 45-1 Ramsey Road, Shirley, NY 11967, USA

**Quality Control  
Testing**



12.5% SDS-PAGE Stained with Coomassie Blue.

 Tel: 1-631-559-9269 1-516-512-3133

 Email: [info@creative-biomart.com](mailto:info@creative-biomart.com)  Fax: 1-631-938-8127

 45-1 Ramsey Road, Shirley, NY 11967, USA