

Recombinant Mouse EFEMP1 Protein (18-493 aa), His-tagged

Cat. No. EFEMP1-2166M Lot. No. (See product label)

SPECIFICATION

Product Overview	Recombinant Mouse EFEMP1 Protein (18-493 aa) is produced by Yeast expression system. This protein is fused with a 6xHis tag at the N-terminal. Research Area: Signal Transduction. Protein Description: Full Length of Mature Protein.
Species	Mouse
Source	Yeast
ProteinLength	18-493 aa
Description	Binds EGFR, the EGF receptor, inducing EGFR autophosphorylation and the activation of downstream signaling pathways. May play a role in cell adhesion and migration. May function as a negative regulator of chondrocyte differentiation. In the olfactory epithelium, it may regulate glial cell migration, differentiation and the ability of glial cells to support neuronal neurite outgrowth.
Form	Tris-based buffer,50% glycerol
Molecular Mass	55.0 kDa
AA Sequence	QYTEETITYTQCTDGYEWDPIRQQCKDIDECDIVPDACKGGMKCVNHYGGYLCLPK TAQIIVNNEHPQQETPAAEASSGATTGTVAARSMATSGVVPGGGFMASATAVAGPE VQTGRNNFVIRRNPPADPQRIPSNPSHRIQCAAGYEQSEHNVCQDIDECTSGTHNCR TDQVCINLRGSFTCQCLPGYQKRGEQCVDIDECTVPPYCHQRCVNTPGSFYCQCS PGFQLAANNYTCVDINECDASNQCAQQCYNILGSFICQCNQGYELSSDRLNCEDIDE

 Tel: 1-631-559-9269 1-516-512-3133

 Email: info@creative-biomart.com  Fax: 1-631-938-8127

 45-1 Ramsey Road, Shirley, NY 11967, USA

CRTSSYLCQYQCVNEPGKFSCMCPQGYEVVRSRTCQDINECETTNECREDEMCW
 NYHGGFRCYPRNPCQDHYVLTSENRCVCPVSNTMCRELPQSIVYKYMSIRSDRSVP
 SDIFQIQATMIYANTINTFRIKSGNENGEFYLRQTSPVSAMLVLVKLSLGPREYIVDLE
 MLTVSSIGTFRTSSVLRLTIIVGPFSE

Purity > 90% as determined by SDS-PAGE.

Notes Repeated freezing and thawing is not recommended. Store working aliquots at 4 centigrade for up to one week.

Storage The shelf life is related to many factors, storage state, buffer ingredients, storage temperature and the stability of the protein itself. Generally, the shelf life of liquid form is 6 months at -20 centigrade/-80 centigrade. The shelf life of lyophilized form is 12 months at -20 centigrade/-80 centigrade.

Concentration A hardcopy of COA will be sent along with the products. Please refer to it for detailed information.

GENE INFORMATION

Gene Name Efemp1 epidermal growth factor-containing fibulin-like extracellular matrix protein 1 [*Mus musculus*]

Official Symbol EFEMP1

Synonyms EFEMP1; FIBL-3; fibulin-3; MGC37612;

Gene ID 216616

mRNA Refseq NM_146015

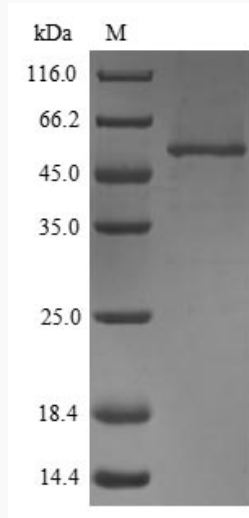
 Tel: 1-631-559-9269 1-516-512-3133

 Email: info@creative-biomart.com  Fax: 1-631-938-8127

 45-1 Ramsey Road, Shirley, NY 11967, USA

Protein Refseq NP_666127

UniProt ID Q8BPB5



(Tris-Glycine gel) Discontinuous SDS-PAGE (reduced) with 5% enrichment gel and 15% separation gel.

Tel: 1-631-559-9269 1-516-512-3133

Email: info@creative-biomart.com Fax: 1-631-938-8127

45-1 Ramsey Road, Shirley, NY 11967, USA