

## Recombinant Human EFEMP1 Protein, His-tagged

Cat. No. EFEMP1-234H Lot. No. (See product label)

### SPECIFICATION

<b>Product Overview</b>	Recombinant Human EFEMP1(Cys258~Phe493) fused with His tag at N-terminal was expressed in E. coli.
<b>Species</b>	Human
<b>Source</b>	E.coli
<b>ProteinLength</b>	Cys258~Phe493
<b>Description</b>	<p>This gene encodes a member of the fibulin family of extracellular matrix glycoproteins. Like all members of this family, the encoded protein contains tandemly repeated epidermal growth factor-like repeats followed by a C-terminus fibulin-type domain.</p> <p>This gene is upregulated in malignant gliomas and may play a role in the aggressive nature of these tumors. Mutations in this gene are associated with Doyme honeycomb retinal dystrophy. Alternatively spliced transcript variants that encode the same protein have been described.</p>
<b>Form</b>	PBS, pH7.4, containing 0.01% SKL, 1mM DTT, 5% Trehalose and Proclin300.
<b>Molecular Mass</b>	28.4kDa
<b>Endotoxin</b>	<1.0EU per 1g (determined by the LAL method)
<b>Purity</b>	> 95%

 Tel: 1-631-559-9269 1-516-512-3133

 Email: [info@creative-biomart.com](mailto:info@creative-biomart.com)  Fax: 1-631-938-8127

 45-1 Ramsey Road, Shirley, NY 11967, USA

<b>Applications</b>	Positive Control; Immunogen; SDS-PAGE; WB. If bio-activity of the protein is needed, please check active protein.
<b>Stability</b>	The thermal stability is described by the loss rate. The loss rate was determined by accelerated thermal degradation test, that is, incubate the protein at 37 centigrade for 48h, and no obvious degradation and precipitation were observed. The loss rate is less than 5% within the expiration date under appropriate storage condition.
<b>Storage</b>	Avoid repeated freeze/thaw cycles. Store at 2-8 centigrade for one month. Aliquot and store at -80 centigrade for 12 months.
<b>Reconstitution</b>	Reconstitute in PBS or others.
<b>GENE INFORMATION</b>	
<b>Gene Name</b>	EFEMP1 EGF containing fibulin-like extracellular matrix protein 1 [ Homo sapiens ]
<b>Official Symbol</b>	EFEMP1
<b>Synonyms</b>	EFEMP1; EGF containing fibulin-like extracellular matrix protein 1; DHRD, EGF containing fibulin like extracellular matrix protein 1 , FBNL, fibrillin like; EGF-containing fibulin-like extracellular matrix protein 1; FBLN3; fibulin 3; MTLV; S1 5; FIBL-3; fibulin-3; extracellular protein S1-5; DHRD; DRAD; FBNL; MLVT; S1-5; FLJ35535; MGC111353;
<b>Gene ID</b>	2202
<b>mRNA Refseq</b>	NM_001039348
<b>Protein Refseq</b>	NP_001034437

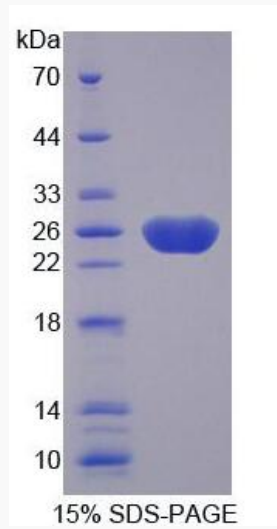
 Tel: 1-631-559-9269 1-516-512-3133

 Email: [info@creative-biomart.com](mailto:info@creative-biomart.com)  Fax: 1-631-938-8127

 45-1 Ramsey Road, Shirley, NY 11967, USA

MIM 601548

UniProt ID Q12805



 Tel: 1-631-559-9269 1-516-512-3133

 Email: [info@creative-biomart.com](mailto:info@creative-biomart.com)  Fax: 1-631-938-8127

 45-1 Ramsey Road, Shirley, NY 11967, USA