

Recombinant Human EFEMP1 protein, His-tagged

Cat. No. EFEMP1-4324H Lot. No. (See product label)

SPECIFICATION

Product Overview	Recombinant Human EFEMP1 protein(Q12805-1)(Gln18-Phe493), fused with N-terminal His tag, was expressed in HEK293.
Species	Human
Source	HEK293
ProteinLength	Gln18-Phe493
Tag	N-His
Form	Supplied as 0.22µm filtered solution in PBS (pH 7.4).
Bio-activity	Immobilized Human EFEMP1, His Tag at 2ug/ml (100ul/Well) on the plate. Dose response curve for Anti-EFEMP1 Antibody, hFc Tag with the EC50 of 29.6ng/ml determined by ELISA (QC Test).
Molecular Mass	The protein has a predicted MW of 53.9 kDa. Due to glycosylation, the protein migrates to 55-60 kDa based on Tris-Bis PAGE result.
Endotoxin	Less than 1EU per µg by the LAL method.
Purity	> 95% as determined by Tris-Bis PAGE;> 95% as determined by HPLC
Storage	Valid for 12 months from date of receipt when stored at -80°C. Recommend to aliquot

 Tel: 1-631-559-9269 1-516-512-3133

 Email: info@creative-biomart.com  Fax: 1-631-938-8127

 45-1 Ramsey Road, Shirley, NY 11967, USA

the protein into smaller quantities for optimal storage. Please do not repeated freeze-thaw cycles.

Reconstitution

It is recommended that sterile water be added to the vial to prepare a stock solution of 0.2 ug/ul. Centrifuge the vial at 4°C before opening to recover the entire contents.

GENE INFORMATION

Gene Name

EFEMP1 EGF containing fibulin-like extracellular matrix protein 1 [Homo sapiens]

Official Symbol

EFEMP1

Synonyms

EFEMP1; EGF containing fibulin-like extracellular matrix protein 1; DHRD, EGF containing fibulin like extracellular matrix protein 1 , FBNL, fibrillin like; EGF-containing fibulin-like extracellular matrix protein 1; FBLN3; fibulin 3; MTLV; S1 5; FIBL-3; fibulin-3; extracellular protein S1-5; DHRD; DRAD; FBNL; MLVT; S1-5; FLJ35535; MGC111353;

Gene ID

2202

mRNA Refseq

NM_001039348

Protein Refseq

NP_001034437

MIM

601548

UniProt ID

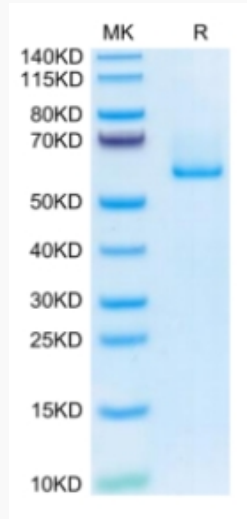
Q12805

 Tel: 1-631-559-9269 1-516-512-3133

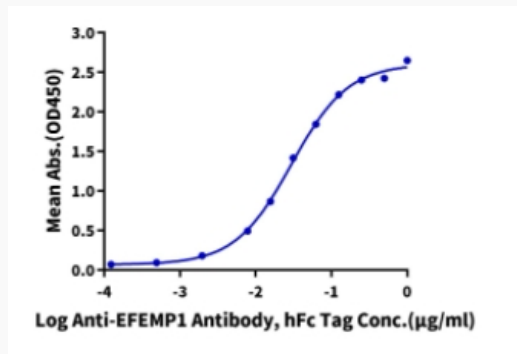
 Email: info@creative-biomart.com  Fax: 1-631-938-8127

 45-1 Ramsey Road, Shirley, NY 11967, USA

Tris-Bis PAGE



ELISA Data



 Tel: 1-631-559-9269 1-516-512-3133

 Email: info@creative-biomart.com  Fax: 1-631-938-8127

 45-1 Ramsey Road, Shirley, NY 11967, USA