

Recombinant Human EFEMP1 Protein, Myc/DDK-tagged, C13 and N15-labeled

Cat. No. EFEMP1-5614H Lot. No. (See product label)

SPECIFICATION

Product Overview	EFEMP1 MS Standard C13 and N15-labeled recombinant protein (NP_001034437) with a C-terminal MYC/DDK tag, was expressed in HEK293 cells.
Species	Human
Source	HEK293
Description	<p>This gene encodes a member of the fibulin family of extracellular matrix glycoproteins. Like all members of this family, the encoded protein contains tandemly repeated epidermal growth factor-like repeats followed by a C-terminus fibulin-type domain.</p> <p>This gene is upregulated in malignant gliomas and may play a role in the aggressive nature of these tumors. Mutations in this gene are associated with Doyme honeycomb retinal dystrophy. Alternatively spliced transcript variants that encode the same protein have been described.</p>
Molecular Mass	54.6 kDa
AA Sequence	<pre>MLKALFLTMLTLALVKSQDTEETITYTQCTDGYEWDVPVRQQCKDIDECDIVPDACKG GMKCVNHYGGYLCLPKTAQIIVNNEQPQGETQPAEGTSGATTGVVAASSMATSGVL PGGGFVASAAVAGPEMQTGRNNFVIRRNPAQPQRIPSNPSHRIQCAAGYEQSEH NVCQDIDECTAGTHNCRADQVCINLRGSFACQCPPGYQKRGEQCVDIDECTIPPYC HQRCVNTPGSFYCQCSPGFQLAANNYTCVDINECDASNQCAQQCYNILGSFICQCN QGYELSSDRLNCEDIDECRTSSYLCQYQCVNEPGKFSCMCPQGYQVVRRTCQDI</pre>

 Tel: 1-631-559-9269 1-516-512-3133

 Email: info@creative-biomart.com  Fax: 1-631-938-8127

 45-1 Ramsey Road, Shirley, NY 11967, USA

NECETTNECREDEM CWNYHGGFRCYPRNPCQDPYILTPENRCVCPVSNAMCRELP
 QSIVYKYMSIRSDRSVPSDIFQIQATTIYANTINTFRIKSGNENGEFYLRQTSPVSAML
 VLVKSLSGPREHIVDLEMLTVSSIGTFRTSSVLRLTIIVGPFSTRTRPLEQKLISEEDL
 AANDILDYKDDDDKV

Purity > 80% as determined by SDS-PAGE and Coomassie blue staining

Stability Stable for 3 months from receipt of products under proper storage and handling conditions.

Storage Store at -80 centigrade. Avoid repeated freeze-thaw cycles.

Concentration 50 µg/mL as determined by BCA

Storage Buffer 100 mM glycine, 25 mM Tris-HCl, pH 7.3.

GENE INFORMATION

Gene Name EFEMP1 EGF containing fibulin-like extracellular matrix protein 1 [Homo sapiens (human)]

Official Symbol EFEMP1

Synonyms EFEMP1; EGF containing fibulin-like extracellular matrix protein 1; DHRD, EGF containing fibulin like extracellular matrix protein 1, FBNL, fibrillin like; EGF-containing fibulin-like extracellular matrix protein 1; FBLN3; fibulin 3; MTLV; S1 5; FIBL-3; fibulin-3; extracellular protein S1-5; DHRD; DRAD; FBNL; MLVT; S1-5; FLJ35535; MGC111353;

Gene ID 2202

 Tel: 1-631-559-9269 1-516-512-3133

 Email: info@creative-biomart.com  Fax: 1-631-938-8127

 45-1 Ramsey Road, Shirley, NY 11967, USA

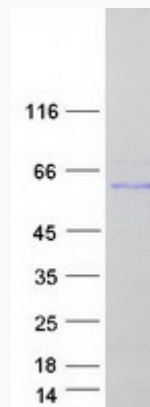
mRNA Refseq [NM_001039348](#)

Protein Refseq [NP_001034437](#)

MIM [601548](#)

UniProt ID [Q12805](#)

SDS-PAGE



 Tel: 1-631-559-9269 1-516-512-3133

 Email: info@creative-biomart.com  Fax: 1-631-938-8127

 45-1 Ramsey Road, Shirley, NY 11967, USA