

Recombinant Human EFEMP2 Protein, GST-tagged

Cat. No. EFEMP2-3086H Lot. No. (See product label)

SPECIFICATION

Product Overview	Human EFEMP2 full-length ORF (no protein_acc, 1 a.a. - 229 a.a.) recombinant protein with GST tag at N-terminal.
Species	Human
Source	Wheat Germ
Description	A large number of extracellular matrix proteins have been found to contain variations of the epidermal growth factor (EGF) domain and have been implicated in functions as diverse as blood coagulation, activation of complement and determination of cell fate during development. The protein encoded by this gene contains four EGF2 domains and six calcium-binding EGF2 domains. This gene is necessary for elastic fiber formation and connective tissue development. Defects in this gene are cause of an autosomal recessive cutis laxa syndrome. Alternatively spliced transcript variants have been identified for this gene. [provided by RefSeq, Jan 2011]
Molecular Mass	52 kDa
AA Sequence	MGAPCEQRCFNSYGTFLCRCHQGYELHRDGFSCSDIDECSYSSYLQYRCVNEPG RFSCHCPQGYQLLATRLCQDIDECESGAHQCSAQTCVNFHGGYRCVDTNRCVEP YIQVSENRLCPASNPLCREQPSSIVHRYMTITERSVVPADVVFQIQATSVYPGAYNAF QIRAGPRPAGDGPPGVRAGPGDGHHEFPHELPGQLCTEAHRLCRGLHLLRSRREP PSLHLP
Applications	Enzyme-linked Immunoabsorbent Assay

 Tel: 1-631-559-9269 1-516-512-3133

 Email: info@creative-biomart.com  Fax: 1-631-938-8127

 45-1 Ramsey Road, Shirley, NY 11967, USA

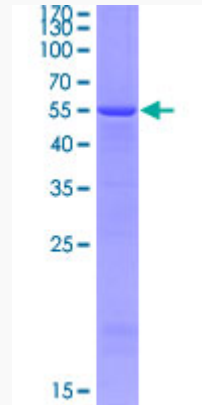
	Western Blot (Recombinant protein) Antibody Production Protein Array
Notes	Best use within three months from the date of receipt of this protein.
Storage	Store at -80 centigrade. Aliquot to avoid repeated freezing and thawing.
Storage Buffer	50 mM Tris-HCl, 10 mM reduced Glutathione, pH=8.0 in the elution buffer.
GENE INFORMATION	
Gene Name	EFEMP2 EGF containing fibulin-like extracellular matrix protein 2 [Homo sapiens]
Official Symbol	EFEMP2
Synonyms	EFEMP2; EGF containing fibulin-like extracellular matrix protein 2; EGF containing fibulin like extracellular matrix protein 2; EGF-containing fibulin-like extracellular matrix protein 2; FBLN4; fibulin 4; UPH1; FIBL-4; fibulin-4; mutant p53 binding protein 1; MBP1; ARCL1B;
Gene ID	30008
mRNA Refseq	NM_016938
Protein Refseq	NP_058634
MIM	604633
UniProt ID	O95967

 Tel: 1-631-559-9269 1-516-512-3133

 Email: info@creative-biomart.com  Fax: 1-631-938-8127

 45-1 Ramsey Road, Shirley, NY 11967, USA

**Quality Control
Testing**



12.5% SDS-PAGE Stained with Coomassie Blue

 Tel: 1-631-559-9269 1-516-512-3133

 Email: info@creative-biomart.com  Fax: 1-631-938-8127

 45-1 Ramsey Road, Shirley, NY 11967, USA