

Recombinant Human EFHD2 Protein, GST-tagged

Cat. No. EFHD2-3095H Lot. No. (See product label)

SPECIFICATION

Product Overview	Human EFHD2 full-length ORF (NP_077305.2, 1 a.a. - 240 a.a.) recombinant protein with GST-tag at N-terminal.
Species	Human
Source	Wheat Germ
Description	EFHD2 (EF-Hand Domain Family Member D2) is a Protein Coding gene. GO annotations related to this gene include calcium ion binding. An important paralog of this gene is EFHD1.
Molecular Mass	53.1 kDa
AA Sequence	MATDELATKLSRRLQMEGEGGGGETPEQPGLNGAAAAAAGAPDEAAEALGSADCEL SAKLLRRADLNQGIGEPQSPSRRVFNPHYTEFKEFSRKQIKDMEKMFQYDAGRDF IDLMELKLMMEKLGAPQTHLGLKNMIKEVDEDFDSKLSFRELLIFRCAAAGELQEDS GLCVLARLSEIDVSSEGVKGAKSFFEAKVQAINVSSRFEEEIKAEQEERKKQAEEMK QRKA AFKELQSTFK
Applications	Enzyme-linked Immunoabsorbent Assay Western Blot (Recombinant protein) Antibody Production Protein Array
Notes	Best use within three months from the date of receipt of this protein.

 Tel: 1-631-559-9269 1-516-512-3133

 Email: info@creative-biomart.com  Fax: 1-631-938-8127

 45-1 Ramsey Road, Shirley, NY 11967, USA

Storage Store at -80 centigrade. Aliquot to avoid repeated freezing and thawing.

Storage Buffer 50 mM Tris-HCl, 10 mM reduced Glutathione, pH=8.0 in the elution buffer.

GENE INFORMATION

Gene Name EFHD2 EF-hand domain family, member D2 [Homo sapiens]

Official Symbol EFHD2

Synonyms EFHD2; EF-hand domain family, member D2; SWS1; RP3-467K16.3

Gene ID 79180

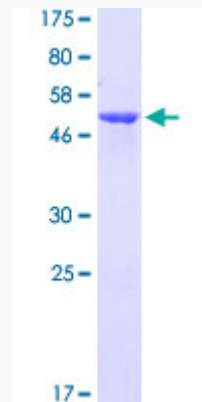
mRNA Refseq NM_024329

Protein Refseq NP_077305

MIM 616450

UniProt ID Q96C19

Quality Control Testing



 Tel: 1-631-559-9269 1-516-512-3133

 Email: info@creative-biomart.com  Fax: 1-631-938-8127

 45-1 Ramsey Road, Shirley, NY 11967, USA



12.5% SDS-PAGE Stained with Coomassie Blue.

 Tel: 1-631-559-9269 1-516-512-3133

 Email: info@creative-biomart.com  Fax: 1-631-938-8127

 45-1 Ramsey Road, Shirley, NY 11967, USA