

# Recombinant Human EFHD2 Protein, Myc/DDK-tagged, C13 and N15-labeled

Cat. No. EFHD2-5430H Lot. No. (See product label)

## SPECIFICATION

<b>Product Overview</b>	EFHD2 MS Standard C13 and N15-labeled recombinant protein (NP_077305) with a C-terminal MYC/DDK tag, was expressed in HEK293 cells.
<b>Species</b>	Human
<b>Source</b>	HEK293
<b>Description</b>	EFHD2 (EF-Hand Domain Family Member D2) is a Protein Coding gene. Diseases associated with EFHD2 include Motion Sickness. Gene Ontology (GO) annotations related to this gene include calcium ion binding. An important paralog of this gene is EFHD1.
<b>Molecular Mass</b>	26.7 kDa
<b>AA Sequence</b>	MATDELATKLSRRLQMEGEGGGGETPEQPGLNGAAAAAAGAPDEAAEALGSADCEL SAKLLRRADLNQGIGEPQSPSRRVFNPHYTEFKEFSRKQIKDMEKMFQYDAGRDF IDLMELKLMMEKLGAPQTHLGLKNMIKEVDEDFDSKLSFRELLIFRCAAAGELQEDS GLCVLARLSEIDVSSEGVKGAKSFFEAKVQAINVSSRFEEEIKAEQEERKKQAEEMK QRKAAFKEKQSTFKTRTRPLEQKLISEEDLAANDILDYKDDDDKV
<b>Purity</b>	> 80% as determined by SDS-PAGE and Coomassie blue staining
<b>Stability</b>	Stable for 3 months from receipt of products under proper storage and handling conditions.

 Tel: 1-631-559-9269 1-516-512-3133

 Email: [info@creative-biomart.com](mailto:info@creative-biomart.com)  Fax: 1-631-938-8127

 45-1 Ramsey Road, Shirley, NY 11967, USA

<b>Storage</b>	Store at -80 centigrade. Avoid repeated freeze-thaw cycles.
<b>Concentration</b>	50 µg/mL as determined by BCA
<b>Storage Buffer</b>	100 mM glycine, 25 mM Tris-HCl, pH 7.3.

## GENE INFORMATION

<b>Gene Name</b>	EFHD2 EF-hand domain family member D2 [ Homo sapiens (human) ]
<b>Official Symbol</b>	EFHD2
<b>Synonyms</b>	EFHD2; EF-hand domain family member D2; SWS1; EF-hand domain-containing protein D2; EF hand domain containing 2; swiprosin 1; testicular tissue protein Li 62
<b>Gene ID</b>	79180
<b>mRNA Refseq</b>	NM_024329
<b>Protein Refseq</b>	NP_077305
<b>MIM</b>	616450
<b>UniProt ID</b>	Q96C19

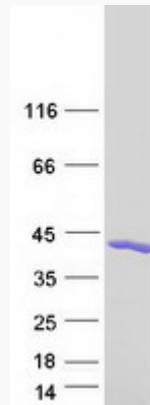
 Tel: 1-631-559-9269 1-516-512-3133

 Email: [info@creative-biomart.com](mailto:info@creative-biomart.com)  Fax: 1-631-938-8127

 45-1 Ramsey Road, Shirley, NY 11967, USA



SDS-PAGE



Tel: 1-631-559-9269 1-516-512-3133

Email: [info@creative-biomart.com](mailto:info@creative-biomart.com) Fax: 1-631-938-8127

45-1 Ramsey Road, Shirley, NY 11967, USA