

## Active Recombinant Human EFNA1 protein, His-tagged

Cat. No. EFNA1-2032H Lot. No. (See product label)

### SPECIFICATION

<b>Product Overview</b>	Active Recombinant Human EFNA1 protein(P20827)(19-182 aa), fused with N-terminal His tag, was expressed in E.coli.
<b>Species</b>	Human
<b>Source</b>	E.coli
<b>ProteinLength</b>	19-182 aa
<b>Form</b>	PBS, pH7.4, containing 0.01% SKL, 1mM DTT, 5% Trehalose and Proclin300.
<b>Bio-activity</b>	Ephrin-A1 (EFNA1), also known as EPLG1, LERK1, TNFAIP4, Immediate early response protein B61, is a member of the A-type ephrin family of cell surface proteins that function as ligands for the A-type Eph receptor tyrosine kinase family. EFNA1 plays an important role in angiogenesis and tumor neovascularization. EFNA1 widely affects tumor growth through enhancing tumor angiogenesis, malignant cell events and invasiveness. Ephrin Type A Receptor 1 (EPHA1) is one of high-affinity ligands for EFNA1, thus a functional binding ELISA assay was conducted to detect the interaction of recombinant human EFNA1 and recombinant mouse EPHA1. Briefly, biotin-linked EFNA1 were diluted serially in PBS, with 0.01% BSA (pH 7.4). Duplicate samples of 100 ul were then transferred to EPHA1-coated microtiter wells and incubated for 1h at 37°C. Wells were washed with PBST 3 times and incubation with Streptavidin-HRP for 30min, then wells were aspirated and washed 5 times. With the addition of substrate solution, wells were incubated 15-25 minutes at 37°C. Finally,

 Tel: 1-631-559-9269 1-516-512-3133

 Email: [info@creative-biomart.com](mailto:info@creative-biomart.com)  Fax: 1-631-938-8127

 45-1 Ramsey Road, Shirley, NY 11967, USA

add 50 µstop solution to the wells and read at 450 nm immediately. The binding activity of recombinant human EFNA1 and recombinant mouse EPHA1 was shown, the EC50 for this effect is 0.24 ug/mL.

**Molecular Mass** 23.1kDa

**Endotoxin** <1.0EU per 1µg (determined by the LAL method).

**Purity** > 95%

**Storage** Avoid repeated freeze/thaw cycles. Store at 2-8°C for one month. Store at -20°C for 12 months. Aliquot and store at -80°C for 12 months.

**Reconstitution** Reconstitute in 10mM PBS (pH7.4) to a concentration of 0.1-1.0 mg/mL. Do not vortex.

## GENE INFORMATION

**Gene Name** EFNA1 ephrin-A1 [ Homo sapiens ]

**Official Symbol** EFNA1

**Synonyms** EFNA1; ephrin-A1; EPLG1, TNFAIP4; ECKLG; LERK1; TNF alpha-induced protein 4; ligand of eph-related kinase 1; immediate early response protein B61; eph-related receptor tyrosine kinase ligand 1; tumor necrosis factor alpha-induced protein 4; tumor necrosis factor, alpha-induced protein 4; B61; EFL1; EPLG1; LERK-1; TNFAIP4;

**Gene ID** 1942

**mRNA Refseq** NM\_004428

 Tel: 1-631-559-9269 1-516-512-3133

 Email: [info@creative-biomart.com](mailto:info@creative-biomart.com)  Fax: 1-631-938-8127

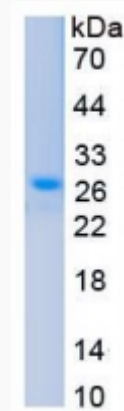
 45-1 Ramsey Road, Shirley, NY 11967, USA

**Protein Refseq** NP\_004419

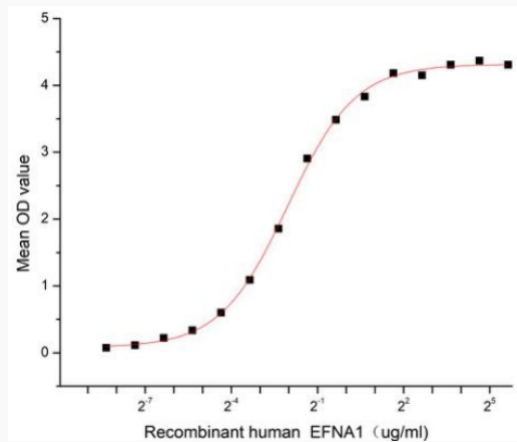
**MIM** 191164

**UniProt ID** P20827

**SDS-PAGE**



**Activity**



 Tel: 1-631-559-9269 1-516-512-3133

 Email: [info@creative-biomart.com](mailto:info@creative-biomart.com)  Fax: 1-631-938-8127

 45-1 Ramsey Road, Shirley, NY 11967, USA