

Active Recombinant Human EFNA1 protein, His-tagged

Cat. No. EFNA1-2238H Lot. No. (See product label)

SPECIFICATION

Product Overview	Active Recombinant Human EFNA1 protein(NP_004419.2)(Met 1-Ser182) was expressed in HEK293, fused with a polyhistidine tag at the C-terminus.
Species	Human
Source	HEK293
ProteinLength	1-182 aa
Form	Lyophilized from sterile PBS, pH 7.4.
Bio-activity	Measured by its ability to compete with human EFNA1 for binding to immobilized human EphA2 in a functional ELISA assay.
Molecular Mass	The recombinant human Ephrin-A1 comprises 175 amino acids a predicted molecular mass of 20.8 kDa. As a result of glycosylation, rh Ephrin-A1 migrates as an approximately 26 kDa band in SDS-PAGE under reducing conditions.
Endotoxin	< 1.0 EU per µg of the protein as determined by the LAL method.
Purity	> 97 % as determined by SDS-PAGE
Storage	Store it under sterile conditions at -20°C to -80°C upon receiving. Recommend to aliquot the protein into smaller quantities for optimal storage. Avoid repeated freeze-thaw cycles.

 Tel: 1-631-559-9269 1-516-512-3133

 Email: info@creative-biomart.com  Fax: 1-631-938-8127

 45-1 Ramsey Road, Shirley, NY 11967, USA

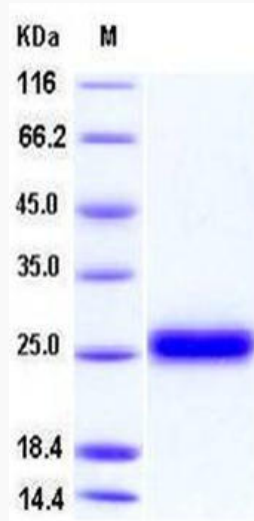
Reconstitution	It is recommended that sterile water be added to the vial to prepare a stock solution of 0.2 ug/ul. Centrifuge the vial at 4°C before opening to recover the entire contents.
protein Refseq-Weblink	http://www.ncbi.nlm.nih.gov/protein/NP_004419.2
Unit ID	P20827
Unit ID-Weblink	http://www.uniprot.org/uniprot/P20827
GENE INFORMATION	
Gene Name	EFNA1 ephrin-A1 [Homo sapiens]
Official Symbol	EFNA1
Synonyms	EFNA1; ephrin-A1; EPLG1, TNFAIP4; ECKLG; LERK1; TNF alpha-induced protein 4; ligand of eph-related kinase 1; immediate early response protein B61; eph-related receptor tyrosine kinase ligand 1; tumor necrosis factor alpha-induced protein 4; tumor necrosis factor, alpha-induced protein 4; B61; EFL1; EPLG1; LERK-1; TNFAIP4;
Gene ID	1942
mRNA Refseq	NM_004428
protein Refseq	NP_004419
MIM	191164

 Tel: 1-631-559-9269 1-516-512-3133

 Email: info@creative-biomart.com  Fax: 1-631-938-8127

 45-1 Ramsey Road, Shirley, NY 11967, USA

SDS-PAGE



 Tel: 1-631-559-9269 1-516-512-3133

 Email: info@creative-biomart.com  Fax: 1-631-938-8127

 45-1 Ramsey Road, Shirley, NY 11967, USA