

Recombinant Human EFNA2 Protein, Myc/DDK-tagged, C13 and N15-labeled

Cat. No. EFNA2-3054H **Lot. No.** (See product label)

SPECIFICATION

Product Overview	EFNA2 MS Standard C13 and N15-labeled recombinant protein (NP_001396) with a C-terminal MYC/DDK tag, was expressed in HEK293 cells.
Species	Human
Source	HEK293
Description	This gene encodes a member of the ephrin family. The protein is composed of a signal sequence, a receptor-binding region, a spacer region, and a hydrophobic region. The EPH and EPH-related receptors comprise the largest subfamily of receptor protein-tyrosine kinases and have been implicated in mediating developmental events, particularly in the nervous system. Based on their structures and sequence relationships, ephrins are divided into the ephrin-A (EFNA) class, which are anchored to the membrane by a glycosylphosphatidylinositol linkage, and the ephrin-B (EFNB) class, which are transmembrane proteins. Posttranslational modifications determine whether this protein localizes to the nucleus or the cytoplasm.
Molecular Mass	23.88 kDa
AA Sequence	MAPAQRPLLPLLLLLLPLPPPPFARAEDAARANS DRYAVYWNRSNPRFHAGAGDDG GGYTVEVSINDYLDIYCPHYGAPLPPAERMEHYVLYMVNGEGHASC DHRQRGFKR WECNRPAAPGGPLKFSEKFQLFTPFSLGFEFRPGHEYYYISATPPNAVDRPCLRLKV

 Tel: 1-631-559-9269 1-516-512-3133

 Email: info@creative-biomart.com  Fax: 1-631-938-8127

 45-1 Ramsey Road, Shirley, NY 11967, USA

YVRPTNETLYEAPEPIFTSNNSCSSPGGCRLFLSTIPVLWTLGSTRTRPLEQKLISEE
DLAANDILDYKDDDDKV

Purity > 80% as determined by SDS-PAGE and Coomassie blue staining

Stability Stable for 3 months from receipt of products under proper storage and handling conditions.

Storage Store at -80 centigrade. Avoid repeated freeze-thaw cycles.

Concentration 50 µg/mL as determined by BCA

Storage Buffer 100 mM glycine, 25 mM Tris-HCl, pH 7.3.

GENE INFORMATION

Gene Name EFNA2 ephrin-A2 [Homo sapiens (human)]

Official Symbol EFNA2

Synonyms EFNA2; ephrin-A2; EPLG6; ELF 1; LERK6; HEK7 ligand; eph-related receptor tyrosine kinase ligand 6; ELF-1; HEK7-L; LERK-6;

Gene ID 1943

mRNA Refseq NM_001405

Protein Refseq NP_001396

MIM 602756

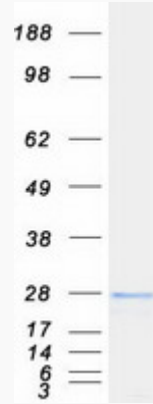
 Tel: 1-631-559-9269 1-516-512-3133

 Email: info@creative-biomart.com  Fax: 1-631-938-8127

 45-1 Ramsey Road, Shirley, NY 11967, USA

UniProt ID O43921

SDS-PAGE



 Tel: 1-631-559-9269 1-516-512-3133

 Email: info@creative-biomart.com  Fax: 1-631-938-8127

 45-1 Ramsey Road, Shirley, NY 11967, USA