

Recombinant Human EFNA2 Protein, GST-tagged

Cat. No. EFNA2-3098H Lot. No. (See product label)

SPECIFICATION

Product Overview Human EFNA2 full-length ORF (AAI48728.1, 1 a.a. - 213 a.a.) recombinant protein with GST-tag at N-terminal.

Species Human

Source Wheat Germ

Description This gene encodes a member of the ephrin family. The protein is composed of a signal sequence, a receptor-binding region, a spacer region, and a hydrophobic region. The EPH and EPH-related receptors comprise the largest subfamily of receptor protein-tyrosine kinases and have been implicated in mediating developmental events, particularly in the nervous system. Based on their structures and sequence relationships, ephrins are divided into the ephrin-A (EFNA) class, which are anchored to the membrane by a glycosylphosphatidylinositol linkage, and the ephrin-B (EFNB) class, which are transmembrane proteins. Posttranslational modifications determine whether this protein localizes to the nucleus or the cytoplasm. [provided by RefSeq, Jul 2008]

Molecular Mass 50.38 kDa

AA Sequence
 MAPAQRPLLPLLLLLLPLPPPPFARAEDAARANS DRYAVYWNRSNPRFHAGAGDDG
 GGYTVEVSINDYLDIYCPHYGAPLPPAERMEHYVLYMVNGEGHASC DHRQRGFKR
 WECNRPAAPGGPLKFSEKQLFTPFSLGFEPGHEYYYISATPPNAVDRPCLRLKV
 YVRPTNETLYEAPEPIFTSNNSCSPGGCRLFLSTIPVLWTL LGS

 Tel: 1-631-559-9269 1-516-512-3133

 Email: info@creative-biomart.com  Fax: 1-631-938-8127

 45-1 Ramsey Road, Shirley, NY 11967, USA

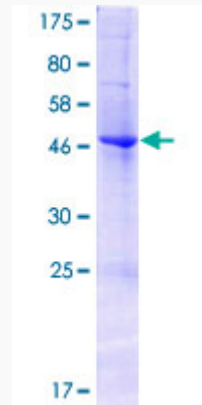
Applications	Enzyme-linked Immunoabsorbent Assay Western Blot (Recombinant protein) Antibody Production Protein Array
Notes	Best use within three months from the date of receipt of this protein.
Storage	Store at -80 centigrade. Aliquot to avoid repeated freezing and thawing.
Storage Buffer	50 mM Tris-HCl, 10 mM reduced Glutathione, pH=8.0 in the elution buffer.
GENE INFORMATION	
Gene Name	EFNA2 ephrin-A2 [Homo sapiens]
Official Symbol	EFNA2
Synonyms	EFNA2; ephrin-A2; EPLG6; ELF 1; LERK6; HEK7 ligand; eph-related receptor tyrosine kinase ligand 6; ELF-1; HEK7-L; LERK-6;
Gene ID	1943
mRNA Refseq	NM_001405
Protein Refseq	NP_001396
MIM	602756
UniProt ID	O43921

 Tel: 1-631-559-9269 1-516-512-3133

 Email: info@creative-biomart.com  Fax: 1-631-938-8127

 45-1 Ramsey Road, Shirley, NY 11967, USA

**Quality Control
Testing**



12.5% SDS-PAGE Stained with Coomassie Blue.

 Tel: 1-631-559-9269 1-516-512-3133

 Email: info@creative-biomart.com  Fax: 1-631-938-8127

 45-1 Ramsey Road, Shirley, NY 11967, USA