

## Active Recombinant Human EFNA3 Protein, Fc-tagged

Cat. No. EFNA3-231H Lot. No. (See product label)

### SPECIFICATION

<b>Product Overview</b>	Active Recombinant Human EFNA3 Protein(P52797-1)(Gln23-Ser213) is expressed from HEK293 with hFc (IgG1) tag at the C-Terminus.
<b>Species</b>	Human
<b>Source</b>	HEK293
<b>ProteinLength</b>	23-213 aa
<b>Form</b>	Lyophilized from sterile PBS, pH 7.4.
<b>Bio-activity</b>	Immobilized Human EPHA10, His Tag at 5µg/ml (100µl/well) on the plate. Dose response curve for Human/Cynomolgus/Rhesus macaque Ephrin-A3, hFc Tag with the EC50 of 7.2ng/ml determined by ELISA.
<b>Molecular Mass</b>	The protein has a predicted MW of 41.8 kDa. Due to glycosylation, the protein migrates to 60-70 kDa based on Bis-Tris PAGE result.
<b>Endotoxin</b>	Less than 1 EU per µg by the LAL method.
<b>Purity</b>	> 95% as determined by Bis-Tris PAGE > 95% as determined by HPLC
<b>Storage</b>	-20 to -80°C for 12 months as supplied from date of receipt. -80°C for 3 months after reconstitution. Recommend to aliquot the protein into smaller quantities for optimal storage. Please minimize freeze-thaw cycles.

 Tel: 1-631-559-9269 1-516-512-3133

 Email: [info@creative-biomart.com](mailto:info@creative-biomart.com)  Fax: 1-631-938-8127

 45-1 Ramsey Road, Shirley, NY 11967, USA

**Reconstitution** Dissolve the lyophilized protein in distilled water.

## GENE INFORMATION

**Gene Name** EFNA3 ephrin-A3 [ Homo sapiens ]

**Official Symbol** EFNA3

**Synonyms** EFNA3; ephrin-A3; EPLG3; Ehk1 L; LERK3; EFL-2; LERK-3; EHK1 ligand; ligand of eph-related kinase 3; eph-related receptor tyrosine kinase ligand 3; EFL2; Ehk1-L;

**Gene ID** 1944

**mRNA Refseq** NM\_004952

**Protein Refseq** NP\_004943

**MIM** 601381

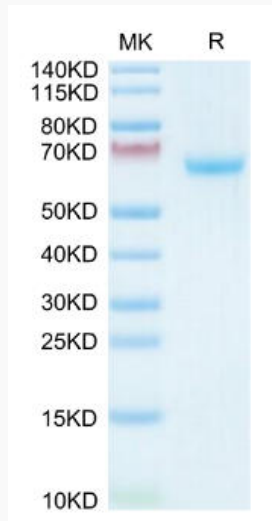
**UniProt ID** P52797

 Tel: 1-631-559-9269 1-516-512-3133

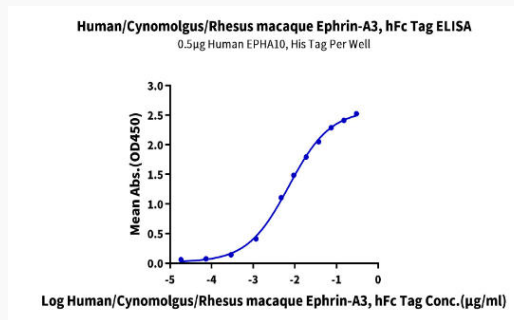
 Email: [info@creative-biomart.com](mailto:info@creative-biomart.com)  Fax: 1-631-938-8127

 45-1 Ramsey Road, Shirley, NY 11967, USA

**Bis-Tris PAGE**



**ELISA Data**



 Tel: 1-631-559-9269 1-516-512-3133

 Email: [info@creative-biomart.com](mailto:info@creative-biomart.com)  Fax: 1-631-938-8127

 45-1 Ramsey Road, Shirley, NY 11967, USA