

Active Recombinant Human EFNA3 protein, Fc-His tagged

Cat. No. EFNA3-77H Lot. No. (See product label)

SPECIFICATION

Product Overview	Active Recombinant Human EFNA3 protein(NP_004943.1) (Met 1-Ser 213) with the C-terminal propeptide removed was expressed in HEK293, fused with the C-terminal polyhistidine-tagged Fc region of human IgG1 at the C-terminus.
Species	Human
Source	HEK293
ProteinLength	1-213 aa
Form	Lyophilized from sterile PBS, pH 7.4.
Bio-activity	Measured by its binding ability in a functional ELISA. Immobilized mouse EphA6-His at 10 µg/mL (100 µl/well) can bind human EphrinA3-Fch, The EC50 of human EphrinA3-Fch is 36.0-85.0 ng/mL.
Molecular Mass	The recombinant human EphrinA3/Fc is a disulfide-linked homodimer after removal of the signal peptide. The reduced monomer consists of 439 amino acids and has a predicted molecular mass of 49.5 kDa. In SDS-PAGE under reducing conditions, the apparent molecular mass of rhEphrinA3/Fc monomer is approximately 60-65 kDa due to glycosylation.
Endotoxin	< 1.0 EU per µg of the protein as determined by the LAL method.
Purity	> 97 % as determined by SDS-PAGE.

 Tel: 1-631-559-9269 1-516-512-3133

 Email: info@creative-biomart.com  Fax: 1-631-938-8127

 45-1 Ramsey Road, Shirley, NY 11967, USA

Storage Store it under sterile conditions at -20°C to -80°C upon receiving. Recommend to aliquot the protein into smaller quantities for optimal storage. Avoid repeated freeze-thaw cycles.

Reconstitution It is recommended that sterile water be added to the vial to prepare a stock solution of 0.2 ug/ul. Centrifuge the vial at 4°C before opening to recover the entire contents.

GENE INFORMATION

Gene Name EFNA3 ephrin-A3 [Homo sapiens]

Official Symbol EFNA3

Synonyms EFNA3; ephrin-A3; EPLG3; Ehk1 L; LERK3; EFL-2; LERK-3; EHK1 ligand; ligand of eph-related kinase 3; eph-related receptor tyrosine kinase ligand 3; EFL2; Ehk1-L;

Gene ID 1944

mRNA Refseq NM_004952

Protein Refseq NP_004943

MIM 601381

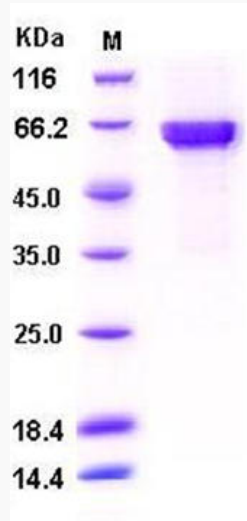
UniProt ID P52797

 Tel: 1-631-559-9269 1-516-512-3133

 Email: info@creative-biomart.com  Fax: 1-631-938-8127

 45-1 Ramsey Road, Shirley, NY 11967, USA

SDS-PAGE



 Tel: 1-631-559-9269 1-516-512-3133

 Email: info@creative-biomart.com  Fax: 1-631-938-8127

 45-1 Ramsey Road, Shirley, NY 11967, USA