

## Active Recombinant Human EFNA4 protein, hFc&His-tagged

Cat. No. EFNA4-2667H Lot. No. (See product label)

### SPECIFICATION

<b>Product Overview</b>	Active Recombinant Human Ephrin-A4/EFNA4 Protein is produced by HEK293 cells expression system. The target protein is expressed with sequence (Leu26-Gly171) of human Ephrin-A4/EFNA4 (Accession # NP_005218.1) fused with an Fc, 6xHis tag at the C-terminus.
<b>Species</b>	Human
<b>Source</b>	HEK293
<b>ProteinLength</b>	Leu26-Gly171
<b>Form</b>	Lyophilized from a 0.22 µm filtered solution of PBS, pH 7.4.
<b>Bio-activity</b>	Measured by its binding ability in a functional ELISA. Immobilized Human EphA7 at 0.5 µg/mL (100 µL/well) can bind Human EFNA4 with a linear range of 0.039-0.942 ng/mL.
<b>Molecular Mass</b>	50 kDa
<b>Endotoxin</b>	< 0.1 EU/µg of the protein by LAL method.
<b>Purity</b>	> 80% by SDS-PAGE.
<b>Storage</b>	Store the lyophilized protein at -20°C to -80 °C for long term. After reconstitution, the protein solution is stable at -20 °C for 3 months, at 2-8 °C for

 Tel: 1-631-559-9269 1-516-512-3133

 Email: [info@creative-biomart.com](mailto:info@creative-biomart.com)  Fax: 1-631-938-8127

 45-1 Ramsey Road, Shirley, NY 11967, USA

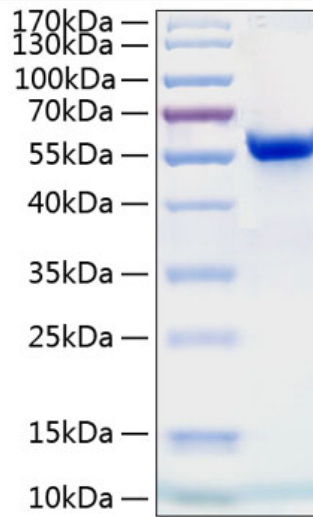
up to 1 week.

**Reconstitution** Reconstitute to a concentration of 0.1-0.5 mg/mL in sterile distilled water.

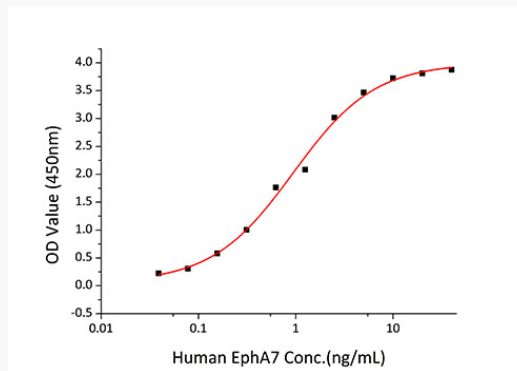
## GENE INFORMATION

**Gene Name** EFNA4 ephrin-A4 [ Homo sapiens ]**Official Symbol** EFNA4**Synonyms** EFNA4; ephrin-A4; EPLG4; LERK4; LERK-4; ligand of eph-related kinase 4; eph-related receptor tyrosine kinase ligand 4; EFL4; FLJ57652; MGC125826;**Gene ID** 1945**mRNA Refseq** NM\_005227**Protein Refseq** NP\_005218**MIM** 601380**UniProt ID** P52798 Tel: 1-631-559-9269 1-516-512-3133 Email: [info@creative-biomart.com](mailto:info@creative-biomart.com)  Fax: 1-631-938-8127 45-1 Ramsey Road, Shirley, NY 11967, USA

**SDS-PAGE**



**Bio-activity**



 Tel: 1-631-559-9269 1-516-512-3133

 Email: [info@creative-biomart.com](mailto:info@creative-biomart.com)  Fax: 1-631-938-8127

 45-1 Ramsey Road, Shirley, NY 11967, USA