

## Recombinant Human EFNA4 protein, His-tagged

Cat. No. EFNA4-323H Lot. No. (See product label)

### SPECIFICATION

<b>Product Overview</b>	Recombinant Human EFNA4 protein(P52798-1)(Leu26-Gly171), fused with C-terminal His tag, was expressed in HEK293.
<b>Species</b>	Human
<b>Source</b>	HEK293
<b>ProteinLength</b>	Leu26-Gly171
<b>Tag</b>	C-His
<b>Form</b>	Lyophilized from 0.22µm filtered solution in PBS (pH 7.4). Normally 5% trehalose is added as protectant before lyophilization.
<b>Bio-activity</b>	Human EphA7, His Tag immobilized on CM5 Chip can bind Human Ephrin-A4, His Tag with an affinity constant of 0.113 µM as determined in SPR assay (Biacore T200).
<b>Molecular Mass</b>	The protein has a predicted MW of 17.5 kDa. Due to glycosylation, the protein migrates to 18-25 kDa based on Tris-Bis PAGE result.
<b>Endotoxin</b>	Less than 1EU per µg by the LAL method.
<b>Purity</b>	> 95% as determined by Tris-Bis PAGE; > 95% as determined by HPLC

 Tel: 1-631-559-9269 1-516-512-3133

 Email: [info@creative-biomart.com](mailto:info@creative-biomart.com)  Fax: 1-631-938-8127

 45-1 Ramsey Road, Shirley, NY 11967, USA

**Storage** Reconstituted protein stable at -80°C for 12 months, 4°C for 1 week. Use a manual defrost freezer and avoid repeated freeze-thaw cycles.

**Reconstitution** Centrifuge tubes before opening. Reconstituting to a concentration more than 100 µg/ml is recommended. Dissolve the lyophilized protein in distilled water.

## GENE INFORMATION

**Gene Name** EFNA4 ephrin-A4 [ Homo sapiens ]

**Official Symbol** EFNA4

**Synonyms** EFNA4; ephrin-A4; EPLG4; LERK4; LERK-4; ligand of eph-related kinase 4; eph-related receptor tyrosine kinase ligand 4; EFL4; FLJ57652; MGC125826;

**Gene ID** 1945

**mRNA Refseq** NM\_005227

**Protein Refseq** NP\_005218

**MIM** 601380

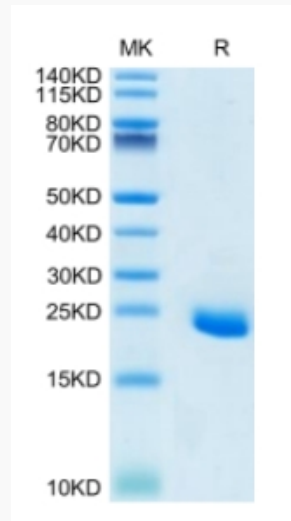
**UniProt ID** P52798

 Tel: 1-631-559-9269 1-516-512-3133

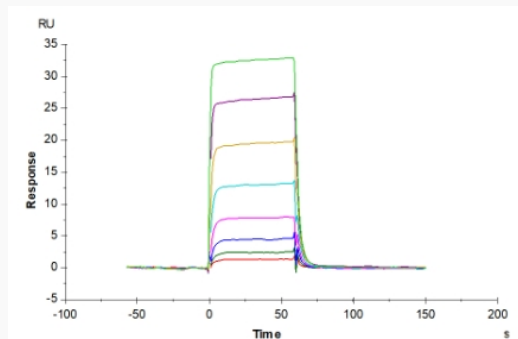
 Email: [info@creative-biomart.com](mailto:info@creative-biomart.com)  Fax: 1-631-938-8127

 45-1 Ramsey Road, Shirley, NY 11967, USA

**Tris-Bis PAGE**



**SPR Data**



 Tel: 1-631-559-9269 1-516-512-3133

 Email: [info@creative-biomart.com](mailto:info@creative-biomart.com)  Fax: 1-631-938-8127

 45-1 Ramsey Road, Shirley, NY 11967, USA