

## Active Recombinant Human EFNB1 protein, hFc&His-tagged

Cat. No. EFNB1-1259H Lot. No. (See product label)

### SPECIFICATION

<b>Product Overview</b>	Active Recombinant Human EFNB1 protein(NP_004420.1)(Met 1-Gly 232) was expressed in HEK293, fused with the C-terminal polyhistidine-tagged Fc region of human IgG1 at the C-terminus.
<b>Species</b>	Human
<b>Source</b>	HEK293
<b>ProteinLength</b>	1-232 aa
<b>Form</b>	Lyophilized from sterile PBS, pH 7.4.
<b>Bio-activity</b>	Measured by its binding ability in a functional ELISA. Immobilized mouse EphB3 at 2 µg/ml (100 µl/well) can bind human EFNB1 Fc chimera with a linear ranger of 1.56-25 ng/ml.
<b>Molecular Mass</b>	The recombinant human EFNB1/Fc chimera is a disulfide-linked homodimeric protein. The reduced monomer consists of 458 amino acids and predicts a molecular mass of 51.2 KDa. In SDS-PAGE under reducing conditions, the apparent molecular mass of the protein is apximately 64 and 36 KDa due to glycosylation.
<b>Endotoxin</b>	< 1.0 EU per µg of the protein as determined by the LAL method.
<b>Purity</b>	> (79.7+18.0) % as determined by SDS-PAGE

 Tel: 1-631-559-9269 1-516-512-3133

 Email: [info@creative-biomart.com](mailto:info@creative-biomart.com)  Fax: 1-631-938-8127

 45-1 Ramsey Road, Shirley, NY 11967, USA

<b>Storage</b>	Store it under sterile conditions at -20°C to -80°C upon receiving. Recommend to aliquot the protein into smaller quantities for optimal storage. Avoid repeated freeze-thaw cycles.
<b>Reconstitution</b>	It is recommended that sterile water be added to the vial to prepare a stock solution of 0.2 ug/ul. Centrifuge the vial at 4°C before opening to recover the entire contents.
<b>protein Refseq-Weblink</b>	<a href="http://www.ncbi.nlm.nih.gov/protein/NP_004420.1">http://www.ncbi.nlm.nih.gov/protein/NP_004420.1</a>
<b>Unit ID</b>	P98172
<b>Unit ID-Weblink</b>	<a href="http://www.uniprot.org/uniprot/P98172">http://www.uniprot.org/uniprot/P98172</a>

## GENE INFORMATION

<b>Gene Name</b>	EFNB1 ephrin-B1 [ Homo sapiens ]
<b>Official Symbol</b>	EFNB1
<b>Synonyms</b>	EFNB1; ephrin-B1; CFNS, craniofrontonasal syndrome (craniofrontonasal dysplasia) , EPLG2; Elk L; LERK2; EFL-3; LERK-2; ELK ligand; ligand of eph-related kinase 2; eph-related receptor tyrosine kinase ligand 2; CFND; CFNS; EFL3; EPLG2; Elk-L; MGC8782;
<b>Gene ID</b>	1947
<b>mRNA Refseq</b>	NM_004429
<b>protein Refseq</b>	NP_004420

 Tel: 1-631-559-9269 1-516-512-3133

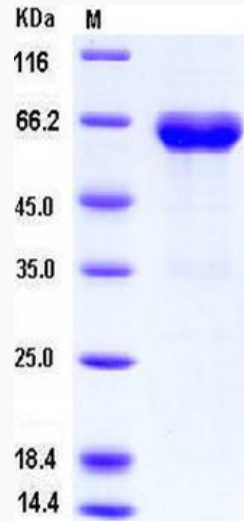
 Email: [info@creative-biomart.com](mailto:info@creative-biomart.com)  Fax: 1-631-938-8127

 45-1 Ramsey Road, Shirley, NY 11967, USA

MIM

300035

SDS-PAGE



 Tel: 1-631-559-9269 1-516-512-3133

 Email: [info@creative-biomart.com](mailto:info@creative-biomart.com)  Fax: 1-631-938-8127

 45-1 Ramsey Road, Shirley, NY 11967, USA