

Active Recombinant Human EFNB1 protein, His-tagged

Cat. No. EFNB1-2626H Lot. No. (See product label)

SPECIFICATION

Product Overview	Active Recombinant Human EFNB1 protein(NP_004420.1)(Met 1-Gly 232) was expressed in HEK293, fused with a polyhistidine tag at the C-terminus.
Species	Human
Source	HEK293
ProteinLength	1-232 aa
Form	Lyophilized from sterile PBS, pH 7.4.
Bio-activity	Measured by its binding ability in a functional ELISA. Immobilized recombinant human EphrinB1 at 10 µg/ml (100 µl/well) can bind human EphB6 with a linear range of 0.16-4 µg/ml.
Molecular Mass	The recombinant human EFNB1 consists of 221 amino acids and predicts a molecular mass of 24.5 kDa. In SDS-PAGE under reducing conditions, the apparent molecular mass of rh EFNB1 is approximately 38 kDa due to glycosylation.
Endotoxin	< 1.0 EU per µg of the protein as determined by the LAL method.
Purity	> 95 % as determined by SDS-PAGE
Storage	Store it under sterile conditions at -20°C to -80°C upon receiving. Recommend to aliquot the protein into smaller quantities for optimal storage. Avoid repeated freeze-

 Tel: 1-631-559-9269 1-516-512-3133

 Email: info@creative-biomart.com  Fax: 1-631-938-8127

 45-1 Ramsey Road, Shirley, NY 11967, USA

thaw cycles.

Reconstitution

It is recommended that sterile water be added to the vial to prepare a stock solution of 0.2 ug/ul. Centrifuge the vial at 4°C before opening to recover the entire contents.

protein Refseq-Weblink

http://www.ncbi.nlm.nih.gov/protein/NP_004420.1

Unit ID

P98172

Unit ID-Weblink

<http://www.uniprot.org/uniprot/P98172>

GENE INFORMATION

Gene Name

EFNB1 ephrin-B1 [Homo sapiens]

Official Symbol

EFNB1

Synonyms

EFNB1; ephrin-B1; CFNS, craniofrontonasal syndrome (craniofrontonasal dysplasia) , EPLG2; Elk L; LERK2; EFL-3; LERK-2; ELK ligand; ligand of eph-related kinase 2; eph-related receptor tyrosine kinase ligand 2; CFND; CFNS; EFL3; EPLG2; Elk-L; MGC8782;

Gene ID

1947

mRNA Refseq

[NM_004429](#)

protein Refseq

NP_004420

MIM

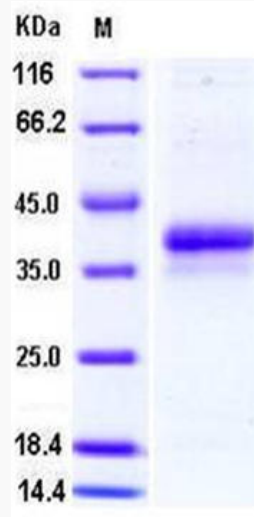
300035

 Tel: 1-631-559-9269 1-516-512-3133

 Email: info@creative-biomart.com  Fax: 1-631-938-8127

 45-1 Ramsey Road, Shirley, NY 11967, USA

SDS-PAGE



 Tel: 1-631-559-9269 1-516-512-3133

 Email: info@creative-biomart.com  Fax: 1-631-938-8127

 45-1 Ramsey Road, Shirley, NY 11967, USA