

Recombinant Human EFNB1 Protein, His-tagged

Cat. No. EFNB1-451H Lot. No. (See product label)

SPECIFICATION

Product Overview	Recombinant Human EFNB1 Protein(NP_004420)(32-239 aa), fused to His tag, was expressed in E. coli.
Species	Human
Source	E.coli
ProteinLength	32-239 aa
Form	The purified protein was Lyophilized from sterile PBS (58mM Na ₂ HPO ₄ , 17mM NaH ₂ PO ₄ , 68mM NaCl, pH7.). 5 % trehalose and 5 % mannitol are added as protectants before lyophilization.
AA Sequence	LEPVSWSLNPKFLSGKGLVIYPKIGDKLDIICPRAEAGRPYEYYKLYLVRPEQAAAC STVLDPNVLVTCNRPEQEIRFTIKFQEFSPNYMGLEFKKHHDDYYITSTSNGLSLEGLN REGGVCRTTRTMKIIMKVGQDPNAVTPPEQLTTSRPSKEADNTVKMATQAPGSRGSLG DSDGKHETVNQEEKSGPGASGGSSGDPDGGFFNSKVA
Purity	95%, by SDS-PAGE with Coomassie Brilliant Blue staining.
Storage	Short-term storage: Store at 2-8°C for (1-2 weeks). Long-term storage: Aliquot and store at -20°C to -80°C for up to 3 months, buffer containing 50% glycerol is recommended for reconstitution. Avoid repeat freeze-thaw cycles.

 Tel: 1-631-559-9269 1-516-512-3133

 Email: info@creative-biomart.com  Fax: 1-631-938-8127

 45-1 Ramsey Road, Shirley, NY 11967, USA

Reconstitution

Reconstitute at 0.25 g/μl in 200 μl sterile water for short-term storage.
 Reconstitution with 200 μl 50% glycerol solution is recommended for longer term storage (see Stability and Storage for more details).
 If a different concentration is needed for your purposes please adjust the reconstitution volume as required (please note: the ion concentration of the final solution will vary according to the volume used).
 Note: Centrifuge vial before opening. When reconstituting, gently pipet and wash down the sides of the vial to ensure full recovery of the protein into solution.

GENE INFORMATION

Gene Name EFNB1 ephrin-B1 [Homo sapiens]

Official Symbol EFNB1

Synonyms

EFNB1; ephrin-B1; CFNS, craniofrontonasal syndrome (craniofrontonasal dysplasia) , EPLG2; Elk L; LERK2; EFL-3; LERK-2; ELK ligand; ligand of eph-related kinase 2; eph-related receptor tyrosine kinase ligand 2; CFND; CFNS; EFL3; EPLG2; Elk-L; MGC8782;

Gene ID 1947

mRNA Refseq NM_004429

Protein Refseq NP_004420

MIM 300035

UniProt ID P98172

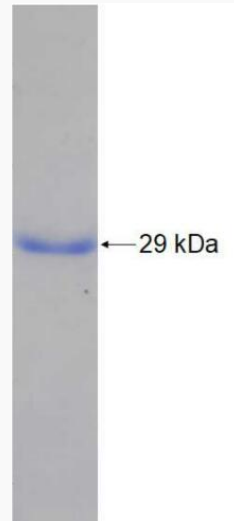
 Tel: 1-631-559-9269 1-516-512-3133

 Email: info@creative-biomart.com  Fax: 1-631-938-8127

 45-1 Ramsey Road, Shirley, NY 11967, USA



SDS-PAGE



Tel: 1-631-559-9269 1-516-512-3133

Email: info@creative-biomart.com Fax: 1-631-938-8127

45-1 Ramsey Road, Shirley, NY 11967, USA