

Recombinant Human EFNB1 Protein, Myc/DDK-tagged, C13 and N15-labeled

Cat. No. EFNB1-864H Lot. No. (See product label)

SPECIFICATION

Product Overview	EFNB1 MS Standard C13 and N15-labeled recombinant protein (NP_004420) with a C-terminal MYC/DDK tag, was expressed in HEK293 cells.
Species	Human
Source	HEK293
Description	The protein encoded by this gene is a type I membrane protein and a ligand of Eph-related receptor tyrosine kinases. It may play a role in cell adhesion and function in the development or maintenance of the nervous system.
Molecular Mass	38 kDa
AA Sequence	MARPGQRWLGKWL VAMVVWALCRLATPLAKNLEPVSWSLNP KFLSGKGLVIYPKI GDKLDIICPRAEAGR PYEYYKLYLVRPEQAAACSTVLDPNVLVTCNRPEQEIRFTIKF QEFSPNYMGLF KKHHDYYITSTSNGLSLEGLNREGGVCRTRTMKIIMKVGQDPNA VTPEQLTTSRPSKEADNTVKMATQAPGSRGSLGSDGKHETVNQEEKSGPGASGG SSGDPDGF FNSKVALFAAVGAGCVIFLLIIIFLTVLLLKLRKRHRKHTQQRAAALSSTL ASPKGGSGTAGTEPSDIIIPLRTTENNYCPHYEKVSGDYGHPVYIVQEMPPQSPANIY YKVTRTRPLEQKLISEEDLAANDILDYKDDDDKV
Purity	> 80% as determined by SDS-PAGE and Coomassie blue staining
Stability	Stable for 3 months from receipt of products under proper storage and handling

 Tel: 1-631-559-9269 1-516-512-3133

 Email: info@creative-biomart.com  Fax: 1-631-938-8127

 45-1 Ramsey Road, Shirley, NY 11967, USA

conditions.

Storage Store at -80 centigrade. Avoid repeated freeze-thaw cycles.

Concentration 50 µg/mL as determined by BCA

Storage Buffer 100 mM glycine, 25 mM Tris-HCl, pH 7.3.

GENE INFORMATION

Gene Name EFNB1 ephrin-B1 [Homo sapiens (human)]

Official Symbol EFNB1

Synonyms EFNB1; ephrin-B1; CFNS, craniofrontonasal syndrome (craniofrontonasal dysplasia), EPLG2; Elk L; LERK2; EFL-3; LERK-2; ELK ligand; ligand of eph-related kinase 2; eph-related receptor tyrosine kinase ligand 2; CFND; CFNS; EFL3; EPLG2; Elk-L; MGC8782;

Gene ID 1947

mRNA Refseq NM_004429

Protein Refseq NP_004420

MIM 300035

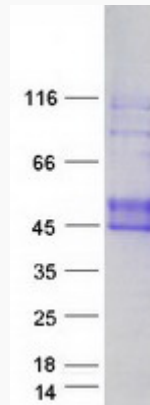
UniProt ID P98172

 Tel: 1-631-559-9269 1-516-512-3133

 Email: info@creative-biomart.com  Fax: 1-631-938-8127

 45-1 Ramsey Road, Shirley, NY 11967, USA

SDS-PAGE



 Tel: 1-631-559-9269 1-516-512-3133

 Email: info@creative-biomart.com  Fax: 1-631-938-8127

 45-1 Ramsey Road, Shirley, NY 11967, USA