

Recombinant Human EFNB2 Protein, Fc-His-tagged

Cat. No. EFNB2-001H Lot. No. (See product label)

SPECIFICATION

Product Overview	Recombinant Human EFNB2 Protein (1-227 aa (extracellular domain)) with Fc and 6xHis tag was expressed in HEK293E cells.
Species	Human
Source	HEK293
ProteinLength	1-227
Description	This gene encodes a member of the ephrin (EPH) family. The ephrins and EPH-related receptors comprise the largest subfamily of receptor protein-tyrosine kinases and have been implicated in mediating developmental events, especially in the nervous system and in erythropoiesis. Based on their structures and sequence relationships, ephrins are divided into the ephrin-A (EFNA) class, which are anchored to the membrane by a glycosylphosphatidylinositol linkage, and the ephrin-B (EFNB) class, which are transmembrane proteins. This gene encodes an EFNB class ephrin which binds to the EPHB4 and EPHA3 receptors.
Molecular Mass	52.8 kDa
Purity	>99% confirmed by 10% SDS-PAGE stained with Coomassie Blue (CB).
Applications	ELISA, Western Blot, Antibody Production, Protein array
Quality Control Test	10% SDS-PAGE stained with Coomassie Blue (CB) and immunoblotted with

 Tel: 1-631-559-9269 1-516-512-3133

 Email: info@creative-biomart.com  Fax: 1-631-938-8127

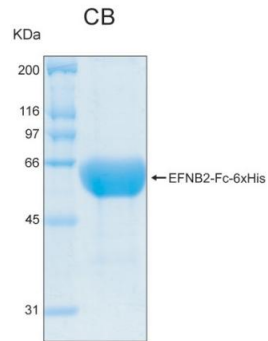
 45-1 Ramsey Road, Shirley, NY 11967, USA

	policlonal antibody against Human Ephrin B2 (WB).
Storage	Prior to reconstitution, store the lyophilized protein at 2–8 centigrade. After reconstitution, store in working aliquots at –80 centigrade.
Expiry	All components are stable for 1 year of receipt, if stored properly.
Storage Buffer	Lyophilized from a solution containing phosphate buffered saline (PBS), pH 7.4. No preservatives added.
Shipping	Lyophilized at Ambient temperature
GENE INFORMATION	
Gene Name	EFNB2 ephrin B2 [Homo sapiens (human)]
Official Symbol	EFNB2
Synonyms	EFNB2; ephrin B2;
Gene ID	1948
mRNA Refseq	NM_004093
Protein Refseq	NP_004084
MIM	600527
UniProt ID	P52799

 Tel: 1-631-559-9269 1-516-512-3133


 Email: info@creative-biomart.com  Fax: 1-631-938-8127

 45-1 Ramsey Road, Shirley, NY 11967, USA



 Tel: 1-631-559-9269 1-516-512-3133

 Email: info@creative-biomart.com  Fax: 1-631-938-8127

 45-1 Ramsey Road, Shirley, NY 11967, USA