

Active Recombinant Human EFNB2 protein, His-tagged

Cat. No. EFNB2-2032H Lot. No. (See product label)

SPECIFICATION

Product Overview	Active Recombinant Human EFNB2 protein(NP_004084.1)(Met 1-Ala 229) was expressed in HEK293, fused with a C-terminal polyhistidine tag.
Species	Human
Source	HEK293
ProteinLength	1-229 aa
Form	Lyophilized from sterile PBS, pH 7.4.
Bio-activity	Measured by its binding ability in a functional ELISA. Immobilized human EFNB2 at 2 µg/ml (100 µl/well) can bind human EphB4 with a linear ranger of 1.56-12.5 ng/ml.
Molecular Mass	The recombinant human EFNB2 consists of 213 amino acids after removal of the signal peptide and predicts a molecular mass of 23.6 kDa. In SDS-PAGE under reducing conditions, the apparent molecular mass of rh EFNB2 is apximately 35-40 kDa due to glycosylation.
Endotoxin	< 1.0 EU per µg of the protein as determined by the LAL method.
Purity	> 97 % as determined by SDS-PAGE
Storage	Store it under sterile conditions at -20°C to -80°C upon receiving. Recommend to aliquot the protein into smaller quantities for optimal storage. Avoid repeated freeze-

 Tel: 1-631-559-9269 1-516-512-3133

 Email: info@creative-biomart.com  Fax: 1-631-938-8127

 45-1 Ramsey Road, Shirley, NY 11967, USA

thaw cycles.

Reconstitution

It is recommended that sterile water be added to the vial to prepare a stock solution of 0.2 ug/ul. Centrifuge the vial at 4°C before opening to recover the entire contents.

protein Refseq-Weblink

http://www.ncbi.nlm.nih.gov/protein/NP_004084.1

Unit ID

P52799

Unit ID-Weblink

<http://www.uniprot.org/uniprot/P52799>

GENE INFORMATION

Gene Name

EFNB2 ephrin-B2 [Homo sapiens]

Official Symbol

EFNB2

Synonyms

EFNB2; ephrin-B2; EPLG5; eph related receptor tyrosine kinase ligand 5; HTK ligand; Htk L; HTKL; LERK5; ligand of eph related kinase 5; MGC126226; MGC126227; MGC126228; LERK-5; ligand of eph-related kinase 5; eph-related receptor tyrosine kinase ligand 5; Htk-L;

Gene ID

1948

mRNA Refseq

[NM_004093](#)

protein Refseq

NP_004084

MIM

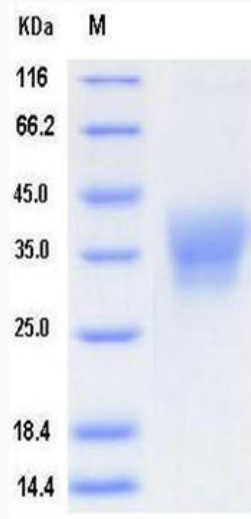
[600527](#)

 Tel: 1-631-559-9269 1-516-512-3133

 Email: info@creative-biomart.com  Fax: 1-631-938-8127

 45-1 Ramsey Road, Shirley, NY 11967, USA

SDS-PAGE



 Tel: 1-631-559-9269 1-516-512-3133

 Email: info@creative-biomart.com  Fax: 1-631-938-8127

 45-1 Ramsey Road, Shirley, NY 11967, USA