

## Active Recombinant Human EFNB2 protein, Fc-His-tagged

Cat. No. EFNB2-2240H Lot. No. (See product label)

### SPECIFICATION

<b>Product Overview</b>	Active Recombinant Human EFNB2 protein(NP_004084.1)(Met 1-Ala 229) was expressed in HEK293, fused with the C-terminal polyhistidine-tagged Fc region of human IgG1 at the C-terminus.
<b>Species</b>	Human
<b>Source</b>	HEK293
<b>ProteinLength</b>	1-229 aa
<b>Form</b>	Lyophilized from sterile PBS, pH 7.4.
<b>Bio-activity</b>	Measured by its binding ability in a functional ELISA. Immobilized human EphB4-his at 2 µg/ml (100 µl/well) can bind human EphrinB2 Fc chimera with a linear range of 1-25 ng/ml. Immobilized human EphB4 at 2 µg/ml (100 µl/well) can bind human EphrinB2 Fc chimera with a linear range of 1-125 ng/ml.
<b>Molecular Mass</b>	The recombinant human EFNB2/Fc chimera is a disulfide-linked homodimeric protein. The reduced monomer consists of 450 amino acids and predicts a molecular mass of 50.3 kDa. In SDS-PAGE under reducing conditions, the apparent molecular mass of rh EFNB2/Fc monomer is approximately 62 kDa due to glycosylation.
<b>Endotoxin</b>	< 1.0 EU per µg of the protein as determined by the LAL method.
<b>Purity</b>	> 97 % as determined by SDS-PAGE

 Tel: 1-631-559-9269 1-516-512-3133

 Email: [info@creative-biomart.com](mailto:info@creative-biomart.com)  Fax: 1-631-938-8127

 45-1 Ramsey Road, Shirley, NY 11967, USA

<b>Storage</b>	Store it under sterile conditions at -20°C to -80°C upon receiving. Recommend to aliquot the protein into smaller quantities for optimal storage. Avoid repeated freeze-thaw cycles.
<b>Reconstitution</b>	It is recommended that sterile water be added to the vial to prepare a stock solution of 0.2 ug/ul. Centrifuge the vial at 4°C before opening to recover the entire contents.
<b>protein Refseq-Weblink</b>	<a href="http://www.ncbi.nlm.nih.gov/protein/NP_004084.1">http://www.ncbi.nlm.nih.gov/protein/NP_004084.1</a>
<b>Unit ID</b>	P52799
<b>Unit ID-Weblink</b>	<a href="http://www.uniprot.org/uniprot/P52799">http://www.uniprot.org/uniprot/P52799</a>

## GENE INFORMATION

<b>Gene Name</b>	EFNB2 ephrin-B2 [ Homo sapiens ]
<b>Official Symbol</b>	EFNB2
<b>Synonyms</b>	EFNB2; ephrin-B2; EPLG5; eph related receptor tyrosine kinase ligand 5; HTK ligand; Htk L; HTKL; LERK5; ligand of eph related kinase 5; MGC126226; MGC126227; MGC126228; LERK-5; ligand of eph-related kinase 5; eph-related receptor tyrosine kinase ligand 5; Htk-L;
<b>Gene ID</b>	1948
<b>mRNA Refseq</b>	NM_004093
<b>protein Refseq</b>	NP_004084

 Tel: 1-631-559-9269 1-516-512-3133

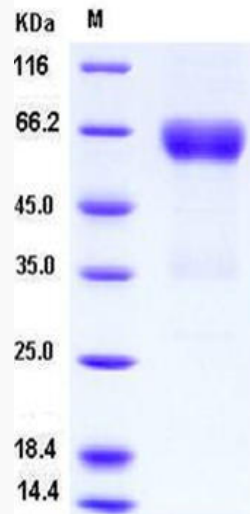
 Email: [info@creative-biomart.com](mailto:info@creative-biomart.com)  Fax: 1-631-938-8127

 45-1 Ramsey Road, Shirley, NY 11967, USA

MIM

600527

SDS-PAGE



 Tel: 1-631-559-9269 1-516-512-3133

 Email: [info@creative-biomart.com](mailto:info@creative-biomart.com)  Fax: 1-631-938-8127

 45-1 Ramsey Road, Shirley, NY 11967, USA