

## Recombinant Human EFNB3 Protein, His-tagged

Cat. No. EFNB3-3106H Lot. No. (See product label)

### SPECIFICATION

**Product Overview** Human EFNB3 (NP\_001397, 28 a.a. - 226 a.a.) partial recombinant protein with His tag expressed in Escherichia coli.

**Species** Human

**Source** E.coli

**ProteinLength** 28-226 a.a.

#### Description

EFNB3, a member of the ephrin gene family, is important in brain development as well as in its maintenance. Moreover, since levels of EFNB3 expression were particularly high in several forebrain subregions compared to other brain subregions, it may play a pivotal role in forebrain function. The EPH and EPH-related receptors comprise the largest subfamily of receptor protein-tyrosine kinases and have been implicated in mediating developmental events, particularly in the nervous system. EPH Receptors typically have a single kinase domain and an extracellular region containing a Cys-rich domain and 2 fibronectin type III repeats. The ephrin ligands and receptors have been named by the Eph Nomenclature Committee (1997). Based on their structures and sequence relationships, ephrins are divided into the ephrin-A (EFNA) class, which are anchored to the membrane by a glycosylphosphatidylinositol linkage, and the ephrin-B (EFNB) class, which are transmembrane proteins. The Eph family of receptors are similarly divided into 2 groups based on the similarity of their extracellular domain sequences and their affinities for binding ephrin-A and ephrin-B ligands. [provided by RefSeq, Jul 2008]

 Tel: 1-631-559-9269 1-516-512-3133

 Email: [info@creative-biomart.com](mailto:info@creative-biomart.com)  Fax: 1-631-938-8127

 45-1 Ramsey Road, Shirley, NY 11967, USA

<b>Form</b>	Liquid
<b>Molecular Mass</b>	24.6 kDa
<b>AA Sequence</b>	MGSSHHHHHSSGLVPRGSHMGSHMLSLEPVYWNSANKRFQAEGGYVLYPQIGD RLDLLCPRARPPGPHSSPNYEFYKLYLVGGAQGRRCEAPPAPNLLLTCDRPDLDR FTIKFQEYSPNLWGHEFRSHHDYIIATSDGTREGLES LQGGVCLTRGMKVLLRVGQ SPRGGAVPRKPVSEMPMERDRGAAHSLEPGKENLPGDPTSNATSRGAEGPLPPPS MP
<b>Purity</b>	> 90% by SDS - PAGE
<b>Applications</b>	SDS-PAGE
<b>Storage</b>	Store at -20 centigrade. For long term storage store at -80 centigrade. Aliquot to avoid repeated freezing and thawing.
<b>Storage Buffer</b>	In 20mM Tris-HCl buffer, pH 8.0 (20% glycerol, 0.1M NaCl, 2M urea).

## GENE INFORMATION

<b>Gene Name</b>	<a href="#">EFNB3 ephrin-B3 [ Homo sapiens ]</a>
<b>Official Symbol</b>	<a href="#">EFNB3</a>
<b>Synonyms</b>	EFNB3; ephrin-B3; EPLG8; LERK 8; Ephrin B3; eph-related receptor tyrosine kinase ligand 8; EPH-related receptor transmembrane ligand ELK-L3; EFL6; LERK8;
<b>Gene ID</b>	<a href="#">1949</a>
<b>mRNA Refseq</b>	<a href="#">NM_001406</a>

 Tel: 1-631-559-9269 1-516-512-3133

 Email: [info@creative-biomart.com](mailto:info@creative-biomart.com)  Fax: 1-631-938-8127

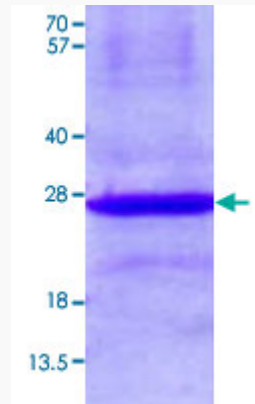
 45-1 Ramsey Road, Shirley, NY 11967, USA

**Protein Refseq** NP\_001397

**MIM** 602297

**UniProt ID** Q15768

**Quality Control  
Testing**



3 µg/lane in 15% SDS-PAGE Stained with Coomassie Blue. Due to the protein nature, dimmers and multimers may be observed.

 Tel: 1-631-559-9269 1-516-512-3133

 Email: [info@creative-biomart.com](mailto:info@creative-biomart.com)  Fax: 1-631-938-8127

 45-1 Ramsey Road, Shirley, NY 11967, USA