

## Recombinant Human EFTUD2 Protein, GST-tagged

**Cat. No.** EFTUD2-3110H    **Lot. No.** (See product label)

### SPECIFICATION

<b>Product Overview</b>	Human EFTUD2 full-length ORF ( NP_004238.2, 1 a.a. - 972 a.a.) recombinant protein with GST-tag at N-terminal.
<b>Species</b>	Human
<b>Source</b>	Wheat Germ
<b>Description</b>	This gene encodes a GTPase which is a component of the spliceosome complex which processes precursor mRNAs to produce mature mRNAs. Mutations in this gene are associated with mandibulofacial dysostosis with microcephaly. Multiple transcript variants encoding different isoforms have been found for this gene. [provided by RefSeq, Apr 2012]
<b>Molecular Mass</b>	135.9 kDa
<b>AA Sequence</b>	<p>           MDTDLYDEFGNYIGPELDSDEDDDELGRETKDLDEMDDDDDDDDVGDHDDDDHPG            MEVVLHEDKYYPTAAEEVYGPEVETIVQEEDTQPLTEPIIKPVKTKKFTLMEQTLPV            VYEMDFLADLMDNSELIRNVTLCGHLHHGKTCFVDCLIEQTHPEIRKRYDQDLCYTDI            LFTEQERGVGKSTPVTVLPDTKGKSYLFNIMDTPGHVNFSDVETAGLRISDGVVLF            IDAAEGVMLNTERLIKHAVQERLAVTVCINKIDRLILELKLPPPTDAYYKLRHIVDEVNGL            ISMYSTDENLILSPLLGNVCFSSSQYSICFTLVSFADYADTFGDINYQEFKRLWGD            YFNPKTRKFTKKAPTSSSQRSFVEFILEPLYKILAQVVGVDVDTSLPRTLDELGIHLTKE            ELKLNIRPLLRVCKKFFGEFTGFVDMCVQHIPSQVKGAKPKIEHTYTGVDSDLGEA            MSDCDPDGPLMCHTTKMYSTDDGVQFHAFGRVLSGTIHAGQPVKVLGENYTLDE         </p>

 Tel: 1-631-559-9269    1-516-512-3133

 Email: [info@creative-biomart.com](mailto:info@creative-biomart.com)     Fax: 1-631-938-8127

 45-1 Ramsey Road, Shirley, NY 11967, USA

EDSQICTVGRLWISVARYHIEVNRVPAGNWVLEIGVDQPIVKTATITEPRGNEEAQIF  
 RPLKFNTTSVIKIAVEPVNPSELPKMLDGLRKVNKSYPSLTTKVEESGEHVILGTGEL  
 YLDCVMHDLRKMYSIDIKVADPVVTFCETVVETSSLKCFEAETPNKKNKITMIAEPL  
 KGLAEDIENEVVQITWNRKKLGEFFQTKYDWDLLAARSIWAFGPDATGPNILVDDTL  
 PSEVDKALLGSVKDSIVQGFQWGTREGPLCDELIRNVKFKILDVAVAQEPLHRGGG  
 QIIPTARRVVYSAFLMATPRLMEPYFVEVQAPADCVSAVYTVLARRRGHVTDQAPI  
 PGSPLYTIKAFIPAIDSFGFETDLRTHHTQGQAFSLSVFHHWQIVPGDPLDKSIVIRPLE  
 PQPAPHLAREFMIKTRRRKGLSESDVSISKFFDDPMLLELAKQDVVLNYPM

**Applications**

Enzyme-linked Immunoabsorbent Assay  
 Western Blot (Recombinant protein)  
 Antibody Production  
 Protein Array

**Notes**

Best use within three months from the date of receipt of this protein.

**Storage**

Store at -80 centigrade. Aliquot to avoid repeated freezing and thawing.

**Storage Buffer**

50 mM Tris-HCl, 10 mM reduced Glutathione, pH=8.0 in the elution buffer.

## GENE INFORMATION

**Gene Name**

[EFTUD2 elongation factor Tu GTP binding domain containing 2 \[ Homo sapiens \]](#)

**Official Symbol**

[EFTUD2](#)

**Synonyms**

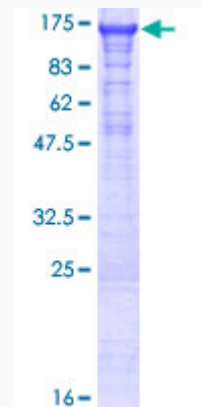
EFTUD2; elongation factor Tu GTP binding domain containing 2; 116 kDa U5 small nuclear ribonucleoprotein component; Snrp116; Snu114; U5 snRNP specific protein; 116 kD; U5 116KD; hSNU114; U5-116 kDa; SNU114 homolog; U5 snRNP specific protein, 116 kD; U5 snRNP-specific protein, 116 kD; U5 snRNP-specific protein, 116 kDa; elongation factor Tu GTP-binding domain-containing protein 2; MFDM; U5-

 Tel: 1-631-559-9269 1-516-512-3133

 Email: [info@creative-biomart.com](mailto:info@creative-biomart.com)  Fax: 1-631-938-8127

 45-1 Ramsey Road, Shirley, NY 11967, USA

116KD; FLJ44695; KIAA0031; DKFZp686E24196;

**Gene ID** 9343**mRNA Refseq** NM\_001142605**Protein Refseq** NP\_001136077**MIM** 603892**UniProt ID** Q15029**Quality Control  
Testing**

12.5% SDS-PAGE Stained with Coomassie Blue.

 Tel: 1-631-559-9269 1-516-512-3133 Email: [info@creative-biomart.com](mailto:info@creative-biomart.com)  Fax: 1-631-938-8127 45-1 Ramsey Road, Shirley, NY 11967, USA