

Recombinant Human EFTUD2 Protein, Myc/DDK-tagged, C13 and N15-labeled

Cat. No. EFTUD2-559H Lot. No. (See product label)

SPECIFICATION

Product Overview

EFTUD2 MS Standard C13 and N15-labeled recombinant protein (NP_004238) with a C-terminal MYC/DDK tag, was expressed in HEK293 cells.

Species

Human

Source

HEK293

Description

This gene encodes a GTPase which is a component of the spliceosome complex which processes precursor mRNAs to produce mature mRNAs. Mutations in this gene are associated with mandibulofacial dysostosis with microcephaly. Multiple transcript variants encoding different isoforms have been found for this gene.

Molecular Mass

109.5 kDa

AA Sequence

```

MDTDLYDEFGNYIGPELDSDEDDDELGRETKDLDEMDDDDDDDDVGDHDDDDHPG
MEVVLHEDKKEYPTAAEVYGPVEVETIVQEEDTQPLTEPIIKPVKTKKFTLMEQTLPTV
VYEMDFLADLMDNSELIRNVTLCGHLHHGKTCFVDCLIEQTHPEIRKRYDQDLCYTDI
LFTEQERGVGKSTPVTVVLPTDKGKSYLFNIMDTPGHVNFSDVETAGLRISDGVVLF
IDAAEGVMLNTERLIKHAVQERLAVTVCINKIDRLILELKLPTDAYYKLRHIVDEVNGL
ISMYSTDENLILSPLLGNVCFSSSQYSICFTLVSFADYADTFGDINYQEFKRLWGDI
YFNPKTRKFTKKAPTSSSQRSFVEFILEPLYKILAQVVGVDVDTSLPRTLDELGIHLTKE
ELKLNIRPLLRLVCKKFFGEFTGFVDMCVQHIPSQVGAQPKIEHTYTGGVDSDLGEA
MSDCDPDGPLMCHTTKMYSTDDGVQFHAFGRVLSGTIHAGQPVKVLGENYTLDE
    
```

 Tel: 1-631-559-9269 1-516-512-3133

 Email: info@creative-biomart.com  Fax: 1-631-938-8127

 45-1 Ramsey Road, Shirley, NY 11967, USA

EDSQICTVGRLWISVARYHIEVNRVPAGNWWLIEGVDQPIVKTATITEPRGNEEAQIF
 RPLKFNTTSVIKIAVEPVNPSELPKMLDGLRKVNKSYPSSLTTKVEESGEHVILGTGEL
 YLDCVMHDLRKMYSIDIKVADPVVTFCETVVETSSLKCAETPNKKNKITMIAEPL
 KGLAEDIENEVVQITWNRKKLGEFFQTKYDWDLLAARSIWAFGPDATGPNILVDDTL
 PSEVDKALLGSVKDSIVQGFQWGTREGPLCDELIRNVKFKILDVVAQEPLHRGGG
 QIIPTARRVVYSAFLMATPRLMEPYFVEVQAPADCVSAVYTVLARRRGHVTDQAPI
 PGSPLYTIKAFIPAIDSFGFETDLRHTHTQGQAFSLSVFHHWQIVPGDPLDKSIVIRPLE
 PQPAPHLAREFMIKTRRRKGLSEDVSISKFFDDPMLLELAKQDVVLNYPMTRTRPLE
 QKLISEEDLAANDILDYKDDDDKV

Purity > 80% as determined by SDS-PAGE and Coomassie blue staining

Stability Stable for 3 months from receipt of products under proper storage and handling conditions.

Storage Store at -80 centigrade. Avoid repeated freeze-thaw cycles.

Concentration 50 µg/mL as determined by BCA

Storage Buffer 100 mM glycine, 25 mM Tris-HCl, pH 7.3.

GENE INFORMATION

Gene Name EFTUD2 elongation factor Tu GTP binding domain containing 2 [Homo sapiens (human)]

Official Symbol EFTUD2

Synonyms EFTUD2; elongation factor Tu GTP binding domain containing 2; 116 kDa U5 small nuclear ribonucleoprotein component; Snrp116; Snu114; U5 snRNP specific protein; 116 kD; U5 116KD; hSNU114; U5-116 kDa; SNU114 homolog; U5 snRNP specific

 Tel: 1-631-559-9269 1-516-512-3133

 Email: info@creative-biomart.com  Fax: 1-631-938-8127

 45-1 Ramsey Road, Shirley, NY 11967, USA

protein, 116 kD; U5 snRNP-specific protein, 116 kD; U5 snRNP-specific protein, 116 kDa; elongation factor Tu GTP-binding domain-containing protein 2; MFDM; U5-116KD; FLJ44695; KIAA0031; DKFZp686E24196;

Gene ID [9343](#)

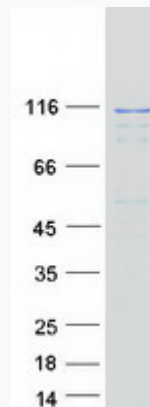
mRNA Refseq [NM_004247](#)

Protein Refseq [NP_004238](#)

MIM [603892](#)

UniProt ID [Q15029](#)

SDS-PAGE



 Tel: 1-631-559-9269 1-516-512-3133

 Email: info@creative-biomart.com  Fax: 1-631-938-8127

 45-1 Ramsey Road, Shirley, NY 11967, USA