

## Recombinant Human EGF protein, GST-tagged

Cat. No. EGF-12320H Lot. No. (See product label)

### SPECIFICATION

**Product Overview** Recombinant Human EGF protein(971-1023 aa), fused with N-terminal GST tag, was expressed in E. coli.

**Species** Human

**Source** E.coli

**ProteinLength** 971-1023 aa

**Tag** N-GST

**Form** The purified protein was Lyophilized from sterile PBS (58mM Na<sub>2</sub>HPO<sub>4</sub>, 17mM NaH<sub>2</sub>PO<sub>4</sub>, 68mM NaCl, pH7.4). 5 % trehalose and 5 % mannitol are added as protectant before lyophilization.

**Purity** 90%, by SDS-PAGE with Coomassie Brilliant Blue staining.

**Storage** Short-term storage: Store at 2-8°C for (1-2 weeks). Long-term storage: Aliquot and store at -20°C to -80°C for up to 3 months, reconstitution with sterile water and addition of an equal volume of glycerol. Avoid repeat freeze-thaw cycles.

**Reconstitution** Reconstitute at 0.25 µg/µl in 200 µl sterile water for short-term storage. After reconstitution with sterile water, if glycerol has no effect on subsequent experiments, it is recommended to add an equal volume of glycerol for long-term storage.

 Tel: 1-631-559-9269 1-516-512-3133

 Email: [info@creative-biomart.com](mailto:info@creative-biomart.com)  Fax: 1-631-938-8127

 45-1 Ramsey Road, Shirley, NY 11967, USA

**AA Sequence** NSDSECPLSHDGYCLHDGVCMYIEALDKYACNCVVG YIGERCQYRDLKWWELR

## GENE INFORMATION

**Gene Name** EGF epidermal growth factor [ Homo sapiens ]

**Official Symbol** EGF

**Synonyms** EGF; epidermal growth factor; epidermal growth factor (beta urogastrone); pro-epidermal growth factor; beta-urogastrone; URG; HOMG4;

**Gene ID** 1950

**mRNA Refseq** NM\_001178130

**Protein Refseq** NP\_001171601

**MIM** 131530

**UniProt ID** P01133

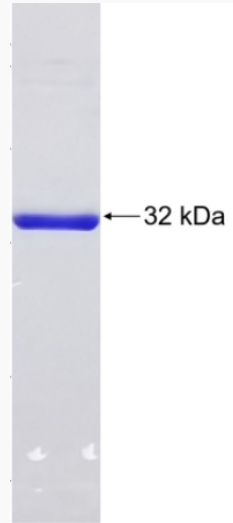
 Tel: 1-631-559-9269 1-516-512-3133

 Email: [info@creative-biomart.com](mailto:info@creative-biomart.com)  Fax: 1-631-938-8127

 45-1 Ramsey Road, Shirley, NY 11967, USA



SDS-PAGE



Tel: 1-631-559-9269 1-516-512-3133

Email: [info@creative-biomart.com](mailto:info@creative-biomart.com) Fax: 1-631-938-8127

45-1 Ramsey Road, Shirley, NY 11967, USA