

Active Recombinant Human EGF protein, hFc-tagged

Cat. No. EGF-551H Lot. No. (See product label)

SPECIFICATION

Product Overview	Active Recombinant Human EGF protein(P01133-1)(Asn971-Arg1023) is expressed from HEK293 with hFc (IgG1) tag at the N-Terminus.
Species	Human
Source	HEK293
ProteinLength	971-1023 aa
Form	Lyophilized from 0.22µm filtered solution in PBS (pH 7.4).
Bio-activity	Immobilized Biotinylated Human EGFR, His Tag at 1µg/ml (100µl/well) on the streptavidin precoated plate (5µg/ml). Dose response curve for Human EGF, hFc Tag with the EC50 of 4.1ng/ml determined by ELISA.
Molecular Mass	The protein has a predicted MW of 32.52 kDa. Due to glycosylation, the protein migrates to 38-43 kDa based on Bis-Tris PAGE result.
Endotoxin	Less than 1 EU per µg by the LAL method.
Purity	> 95% as determined by Bis-Tris PAGE > 95% as determined by HPLC
Storage	-20 to -80°C for 12 months as supplied from date of receipt. -80°C for 3 months after reconstitution. Recommend to aliquot the protein into smaller quantities for optimal storage. Please minimize freeze-thaw cycles.

 Tel: 1-631-559-9269 1-516-512-3133

 Email: info@creative-biomart.com  Fax: 1-631-938-8127

 45-1 Ramsey Road, Shirley, NY 11967, USA

Reconstitution It is recommended that sterile water be added to the vial to prepare a stock solution of 0.2 ug/ul. Centrifuge the vial at 4°C before opening to recover the entire contents.

GENE INFORMATION

Gene Name EGF epidermal growth factor [Homo sapiens]

Official Symbol EGF

Synonyms EGF; epidermal growth factor; epidermal growth factor (beta urogastrone); pro-epidermal growth factor; beta-urogastrone; URG; HOMG4;

Gene ID 1950

mRNA Refseq NM_001178130

Protein Refseq NP_001171601

MIM 131530

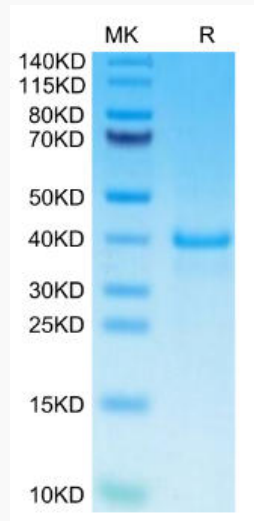
UniProt ID P01133

 Tel: 1-631-559-9269 1-516-512-3133

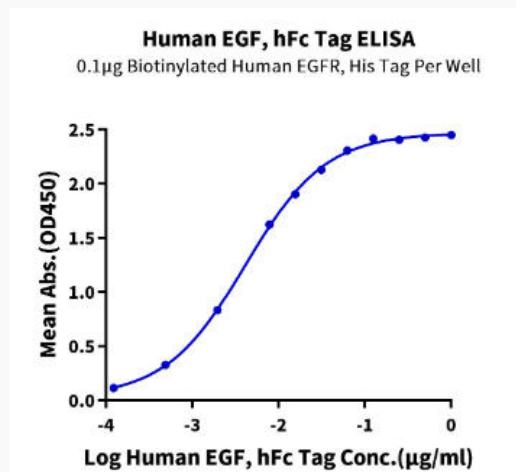
 Email: info@creative-biomart.com  Fax: 1-631-938-8127

 45-1 Ramsey Road, Shirley, NY 11967, USA

Bis-Tris PAGE



ELISA Data



 Tel: 1-631-559-9269 1-516-512-3133

 Email: info@creative-biomart.com  Fax: 1-631-938-8127

 45-1 Ramsey Road, Shirley, NY 11967, USA