

# Active Recombinant Human EGFL6 protein, His-FLAG-tagged

**Cat. No.** EGFL6-447H    **Lot. No.** (See product label)

## SPECIFICATION

<b>Product Overview</b>	Active Recombinant Human EGFL6 protein(NP_056322.2) (Asn22-Asp553) was expressed in Insect Cells with the flag tag at the N-terminus and the histidine tag at the C-terminus.
<b>Species</b>	Human
<b>Source</b>	Insect Cells
<b>ProteinLength</b>	22-553 aa
<b>Form</b>	Lyophilized from sterile 20 mM Tris, 500 mM NaCl, 20 % glycerol, pH 7.4.
<b>Bio-activity</b>	Measured by the ability of the immobilized protein to support the adhesion of NIH-3T3 mouse embryonic fibroblast cells. When $5 \times 10^4$ cells/well are added to CD4 coated plates (1.25 $\mu$ g/mL and 100 $\mu$ L/well), approximately 40%-60% will adhere specifically after 30 minutes at 37°C.
<b>Molecular Mass</b>	The recombinant human EGFL6 consists of 551 amino acids and has a calculated molecular mass of 61.5 kDa.
<b>Endotoxin</b>	< 1.0 EU per $\mu$ g of the protein as determined by the LAL method.
<b>Purity</b>	> 65 % as determined by SDS-PAGE
<b>Storage</b>	Store it under sterile conditions at -20°C to -80°C upon receiving. Recommend to

 Tel: 1-631-559-9269    1-516-512-3133

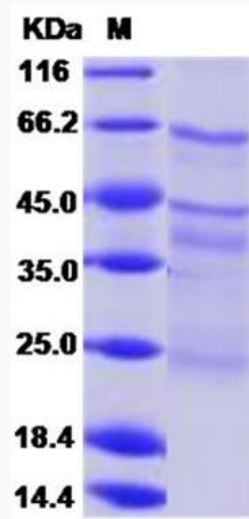
 Email: [info@creative-biomart.com](mailto:info@creative-biomart.com)     Fax: 1-631-938-8127

 45-1 Ramsey Road, Shirley, NY 11967, USA

aliquot the protein into smaller quantities for optimal storage. Avoid repeated freeze-thaw cycles.

**Reconstitution**

It is recommended that sterile water be added to the vial to prepare a stock solution of 0.2 ug/ul. Centrifuge the vial at 4°C before opening to recover the entire contents.

**SDS-PAGE**

 Tel: 1-631-559-9269 1-516-512-3133

 Email: [info@creative-biomart.com](mailto:info@creative-biomart.com)  Fax: 1-631-938-8127

 45-1 Ramsey Road, Shirley, NY 11967, USA