

Recombinant Human EGFL7 Protein, His tagged

Cat. No. EGFL7-001H **Lot. No.** (See product label)

SPECIFICATION

Product Overview	Recombinant Human EGFL7 Protein (21-273 aa) with His tag was expressed in E. coli.
Species	Human
Source	E.coli
ProteinLength	21-273 aa
Description	This gene encodes a secreted endothelial cell protein that contains two epidermal growth factor-like domains. The encoded protein may play a role in regulating vasculogenesis. This protein may be involved in the growth and proliferation of tumor cells. Alternate splicing results in multiple transcript variants.
Molecular Mass	29 kDa
Purity	> 90% by SDS-PAGE
AA Sequence	MEHAYRPGRRVCAVRAHGDPVSESFVQRVYQPFLTTCDGHRACSTYRTIYRTAYR RSPGLAPARPRYACCPGWKRTSGLPGACGAAICQPPCRNGGSCVQPGRRCRCPAG WRGDTQCSDVDECSARRGGCPQRCVNTAGSYWCQCWEGHSLSADGTLCVPKGG PPRVAPNPTGVDSAMKEEVQRLQSRVDLLEEKLQLVLAPLHSLASQALEHGLPDPG SLLVHSFQQLGRIDSLSEQISFLEEQLGSCSCKKDSHHHHHHHH
Endotoxin	< 1.0 EU/μg by LAL

 Tel: 1-631-559-9269 1-516-512-3133

 Email: info@creative-biomart.com  Fax: 1-631-938-8127

 45-1 Ramsey Road, Shirley, NY 11967, USA

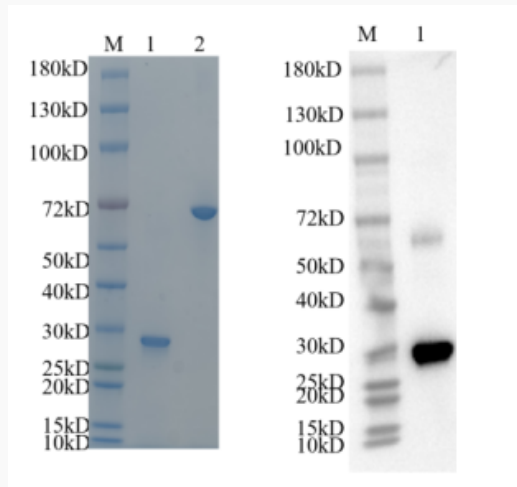
Storage	Store it under sterile conditions at -20 to -80 centigrade. It is recommended that the protein be aliquoted for optimal storage. Avoid repeated freeze-thaw cycles.
Storage Buffer	Sterile PBS, pH6.5, 10% Glycerol, 8% Trehalose
Concentration	1 mg/mL by BCA
GENE INFORMATION	
Gene Name	EGFL7 EGF like domain multiple 7 [Homo sapiens (human)]
Official Symbol	EGFL7
Synonyms	EGFL7; EGF-like-domain, multiple 7; epidermal growth factor-like protein 7; ZNEU1; EGF-like protein 7; NOTCH4-like protein; vascular endothelial statin; multiple EGF-like domains protein 7; multiple epidermal growth factor-like domains protein 7; NEU1; VE-STATIN; RP11-251M1.2; MGC111117
Gene ID	51162
mRNA Refseq	NM_016215
Protein Refseq	NP_057299
MIM	608582
UniProt ID	Q9UHF1

 Tel: 1-631-559-9269 1-516-512-3133

 Email: info@creative-biomart.com  Fax: 1-631-938-8127

 45-1 Ramsey Road, Shirley, NY 11967, USA

SDS-PAGE and WB



Reducing 4%-20% SDS-PAGE (CBB stained) and WB (Anti-His Mouse Monoclonal antibody) analysis profiles of purified EGFL7. 1. EGFL7: 1 µg 2. BSA: 1 µg

 Tel: 1-631-559-9269 1-516-512-3133

 Email: info@creative-biomart.com  Fax: 1-631-938-8127

 45-1 Ramsey Road, Shirley, NY 11967, USA