

# Recombinant Human EGFL7 Protein, Myc/DDK-tagged, C13 and N15-labeled

Cat. No. EGFL7-1694H Lot. No. (See product label)

## SPECIFICATION

|                         |  |
|-------------------------|--|
| <b>Product Overview</b> | EGFL7 MS Standard C13 and N15-labeled recombinant protein (NP_057299) with a C-terminal MYC/DDK tag, was expressed in HEK293 cells.  |
| <b>Species</b>          | Human  |
| <b>Source</b>           | HEK293   |
| <b>Description</b>      | This gene encodes a secreted endothelial cell protein that contains two epidermal growth factor-like domains. The encoded protein may play a role in regulating vasculogenesis. This protein may be involved in the growth and proliferation of tumor cells. Alternate splicing results in multiple transcript variants.                     |
| <b>Molecular Mass</b>   | 29.4 kDa   |
| <b>AA Sequence</b>      | MRGSQEVLLMWSLLVLA VGGTEHAYRPGRRVCAVRAHGDPVSESFVQRVYQPFLTTC<br>CDGHRACSTYRTIYRTAYRRSPGLAPARPRYACCPGWKRTSGLPGACGAAICQPP<br>CRNGGSCVQPGRRCRCPAGWRGDTQCSDVDECSARRGGCPQRCVNTAGSYWCQ<br>CWEGHSLSADGTLCVPGKGGPPRVAPNPTGVDSAMKEEVQRLQSRVDLLEEKLQLV<br>LAPLHSLASQALEHGLPDPGSLLVHSFQQLGRIDSLSEQISFLEEQLGSCSCKKDSS<br>GPTRTRRLEQKLISEEDLAANDILDYKDDDDKV |
| <b>Purity</b>           | > 80% as determined by SDS-PAGE and Coomassie blue staining  |
| <b>Stability</b>        | Stable for 3 months from receipt of products under proper storage and handling   |

 Tel: 1-631-559-9269 1-516-512-3133

 Email: [info@creative-biomart.com](mailto:info@creative-biomart.com)  Fax: 1-631-938-8127

 45-1 Ramsey Road, Shirley, NY 11967, USA

conditions.

**Storage** Store at -80 centigrade. Avoid repeated freeze-thaw cycles.

**Concentration** 50 µg/mL as determined by BCA

**Storage Buffer** 100 mM glycine, 25 mM Tris-HCl, pH 7.3.

## GENE INFORMATION

**Gene Name** EGFL7 EGF like domain multiple 7 [ Homo sapiens (human) ]

**Official Symbol** EGFL7

**Synonyms** EGFL7; EGF-like-domain, multiple 7; epidermal growth factor-like protein 7; ZNEU1; EGF-like protein 7; NOTCH4-like protein; vascular endothelial statin; multiple EGF-like domains protein 7; multiple epidermal growth factor-like domains protein 7; NEU1; VE-STATIN; RP11-251M1.2; MGC111117;

**Gene ID** 51162

**mRNA Refseq** NM\_016215

**Protein Refseq** NP\_057299

**MIM** 608582

**UniProt ID** Q9UHF1

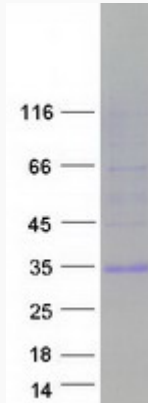
 Tel: 1-631-559-9269 1-516-512-3133

 Email: [info@creative-biomart.com](mailto:info@creative-biomart.com)  Fax: 1-631-938-8127

 45-1 Ramsey Road, Shirley, NY 11967, USA



SDS-PAGE



Tel: 1-631-559-9269 1-516-512-3133

Email: [info@creative-biomart.com](mailto:info@creative-biomart.com) Fax: 1-631-938-8127

45-1 Ramsey Road, Shirley, NY 11967, USA