

# Recombinant Human EGFL8 Protein, Myc/DDK-tagged, C13 and N15-labeled

Cat. No. EGFL8-5339H Lot. No. (See product label)

## SPECIFICATION

<b>Product Overview</b>	EGFL8 MS Standard C13 and N15-labeled recombinant protein (NP_085155) with a C-terminal MYC/DDK tag, was expressed in HEK293 cells.
<b>Species</b>	Human
<b>Source</b>	HEK293
<b>Description</b>	EGFL8 (EGF Like Domain Multiple 8) is a Protein Coding gene. Diseases associated with EGFL8 include Ludwig's Angina and Latent Syphilis. Gene Ontology (GO) annotations related to this gene include calcium ion binding. An important paralog of this gene is EGFL7.
<b>Molecular Mass</b>	32.3 kDa
<b>AA Sequence</b>	MGSRAELCTLLGGFSFLLLLIPGEGAKGGSLRESQGVCSKQTLVVPLHYNESYSQPV YKPYLTL CAGRRICSTYRTMYRVMWREVRREVQQTHAVCCQGWKKRHPGALTCE AICAKPCLNGGVCVRPDQCECAPGWGGKHCHVDVDECRTSITLCSHHCFNTAGSF TCGCPHDLV LGVDGRTCMEGSPEPPTSASILSVAVREA EKDERALKQEIH E L RGRLE RLEQWAGQAGAWVRAVLPVPPEELQPEQVAELWGRGDRIESLSDQVLLLQERLGA CSCEDNSLGLGVNHRTRTRPLEQKLISEEDLAANDILDYKDDDDKV
<b>Purity</b>	> 80% as determined by SDS-PAGE and Coomassie blue staining
<b>Stability</b>	Stable for 3 months from receipt of products under proper storage and handling

 Tel: 1-631-559-9269 1-516-512-3133

 Email: [info@creative-biomart.com](mailto:info@creative-biomart.com)  Fax: 1-631-938-8127

 45-1 Ramsey Road, Shirley, NY 11967, USA

conditions.

**Storage** Store at -80 centigrade. Avoid repeated freeze-thaw cycles.

**Concentration** 50 µg/mL as determined by BCA

**Storage Buffer** 100 mM glycine, 25 mM Tris-HCl, pH 7.3.

## GENE INFORMATION

**Gene Name** EGFL8 EGF like domain multiple 8 [ Homo sapiens (human) ]

**Official Symbol** EGFL8

**Synonyms** EGFL8; EGF-like-domain, multiple 8; C6orf8, chromosome 6 open reading frame 8; epidermal growth factor-like protein 8; NG3; VE-statin-2; EGF-like protein 8; vascular endothelial statin-2; C6orf8; FLJ44493; FLJ52513; FLJ75166; FLJ78536; FLJ97375; MGC44938; MGC59719;

**Gene ID** 80864

**mRNA Refseq** NM\_030652

**Protein Refseq** NP\_085155

**MIM** 609897

**UniProt ID** Q99944

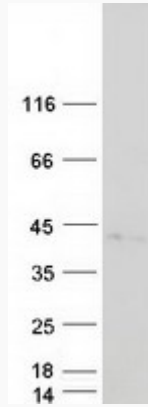
 Tel: 1-631-559-9269 1-516-512-3133

 Email: [info@creative-biomart.com](mailto:info@creative-biomart.com)  Fax: 1-631-938-8127

 45-1 Ramsey Road, Shirley, NY 11967, USA



**SDS-PAGE**



☎ Tel: 1-631-559-9269 1-516-512-3133

☎ Email: [info@creative-biomart.com](mailto:info@creative-biomart.com) ☎ Fax: 1-631-938-8127

☎ 45-1 Ramsey Road, Shirley, NY 11967, USA