

## Recombinant Human EGFL8 protein, His-tagged

**Cat. No.** EGFL8-754H    **Lot. No.** (See product label)

### SPECIFICATION

<b>Product Overview</b>	Recombinant Human EGFL8 protein(Q99944)(26-293aa), fused with N-terminal His tag, was expressed in E.coli.
<b>Species</b>	Human
<b>Source</b>	E.coli
<b>ProteinLength</b>	26-293aa
<b>Form</b>	If the delivery form is liquid, the default storage buffer is Tris/PBS-based buffer, 5%-50% glycerol. If the delivery form is lyophilized powder, the buffer before lyophilization is Tris/PBS-based buffer, 6% Trehalose, pH 8.0.
<b>Molecular Mass</b>	35.7 kDa
<b>Purity</b>	Greater than 85% as determined by SDS-PAGE.
<b>Storage</b>	Store at -20°C/-80°C upon receipt, aliquoting is necessary for mutiple use. Avoid repeated freeze-thaw cycles.
<b>Reconstitution</b>	We recommend that this vial be briefly centrifuged prior to opening to bring the contents to the bottom. Please reconstitute protein in deionized sterile water to a concentration of 0.1-1.0 mg/mL. We recommend to add 5-50% of glycerol (final concentration) and aliquot for long-term storage at -20°C/-80°C.

 Tel: 1-631-559-9269    1-516-512-3133

 Email: [info@creative-biomart.com](mailto:info@creative-biomart.com)     Fax: 1-631-938-8127

 45-1 Ramsey Road, Shirley, NY 11967, USA

**AA Sequence**

AKGGSLRESQGVCSKQTLVVPLHYNESYSQPVYKPYLTLGAGRRICSTYRTMYRVM  
 WREVRREVQQTHAVCCQGWKKRHPGALTCEAICAKPCLNGGVCVVRPDQCECAPG  
 WGGKHCHVDVDECRTSITLCSHHCFNAGSFTCGCPHDLVLGVDGRTCMEGSPEP  
 PTSASILSVAVREA EKDERALKQEIHELGRRLERLEQWAGQAGAWVRAVLPVPEE  
 LQPEQVAELWGRGDRIESLSDQVLLLEERLGACSCEDNSLGLGVNHR

## GENE INFORMATION

**Gene Name** [EGFL8 EGF-like-domain, multiple 8 \[ Homo sapiens \]](#)

**Official Symbol** [EGFL8](#)

**Synonyms** EGFL8; EGF-like-domain, multiple 8; C6orf8, chromosome 6 open reading frame 8; epidermal growth factor-like protein 8; NG3; VE-statin-2; EGF-like protein 8; vascular endothelial statin-2; C6orf8; FLJ44493; FLJ52513; FLJ75166; FLJ78536; FLJ97375; MGC44938; MGC59719;

**Gene ID** [80864](#)

**mRNA Refseq** [NM\\_030652](#)

**Protein Refseq** [NP\\_085155](#)

**MIM** [609897](#)

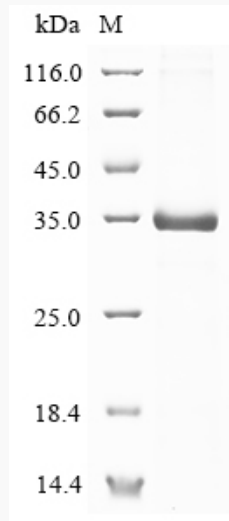
**UniProt ID** [Q99944](#)

 Tel: 1-631-559-9269 1-516-512-3133

 Email: [info@creative-biomart.com](mailto:info@creative-biomart.com)  Fax: 1-631-938-8127

 45-1 Ramsey Road, Shirley, NY 11967, USA

**SDS-PAGE**



 Tel: 1-631-559-9269 1-516-512-3133

 Email: [info@creative-biomart.com](mailto:info@creative-biomart.com)  Fax: 1-631-938-8127

 45-1 Ramsey Road, Shirley, NY 11967, USA