

Recombinant Full Length Human EGFL8 Protein, C-Flag-tagged

Cat. No. EGFL8-879HFL **Lot. No.** (See product label)

SPECIFICATION

Product Overview	Recombinant Full Length Human EGFL8 Protein, fused to Flag-tag at C-terminus, was expressed in Mammalian cells.
Species	Human
Source	Mammalian Cells
Description	Predicted to enable signaling receptor binding activity. Predicted to be involved in anatomical structure development. Predicted to act upstream of or within in utero embryonic development. Predicted to be active in cell surface and extracellular region.
Form	25 mM Tris HCl, pH 7.3, 100 mM glycine, 10% glycerol.
Molecular Mass	32.1 kDa
AA Sequence	MGSRAELCTLLGGFSFLLLLLIPGEGAKGGSLRESQGVCSKQTLVVPLHYNESYSQPV YKPYLTLGAGRI CSTYRTMYRVMWREVRREVQQTHAVCCQGWKKRHPGALTCE AICAKPCLNGGVCVRPDQCECAPGWGGKH CHVDVDECRTSITLCSHHCFNTAGSF TCGCPHDLVLGVDGRTCMEGSPEPPTSASILSVAVREAEKDERA LKQEIHELGRGL ERLEQWAGQAGAWVRAVLPVPPEELQPEQVAELWGRGDRIESLSDQVLLLQERLG ACS CEDNSLGLGVNHRTRTRPLEQKLISEEDLAANDILDYKDDDDKV

 Tel: 1-631-559-9269 1-516-512-3133

 Email: info@creative-biomart.com  Fax: 1-631-938-8127

 45-1 Ramsey Road, Shirley, NY 11967, USA

Purity	> 80% as determined by SDS-PAGE and Coomassie blue staining.
Stability	Stable for 12 months from the date of receipt of the product under proper storage and handling conditions. Avoid repeated freeze-thaw cycles.
Storage	Store at -80 centigrade.
Concentration	>50 ug/mL as determined by microplate BCA method.
Preparation	Recombinant protein was captured through anti-DDK affinity column followed by conventional chromatography steps.
Protein Families	Secreted Protein
Full Length	Full L.

GENE INFORMATION

Gene Name	EGFL8 EGF like domain multiple 8 [Homo sapiens (human)]
Official Symbol	EGFL8
Synonyms	NG3; C6orf8
Gene ID	80864
mRNA Refseq	NM_030652.4
Protein Refseq	NP_085155.1
MIM	609897

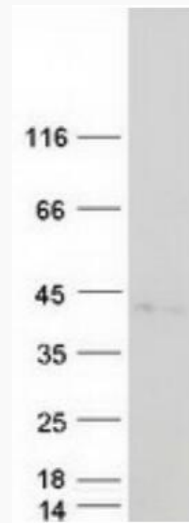
 Tel: 1-631-559-9269 1-516-512-3133

 Email: info@creative-biomart.com  Fax: 1-631-938-8127

 45-1 Ramsey Road, Shirley, NY 11967, USA

UniProt ID

Q99944



Coomassie blue staining of purified EGFL8 protein.

 Tel: 1-631-559-9269 1-516-512-3133

 Email: info@creative-biomart.com  Fax: 1-631-938-8127

 45-1 Ramsey Road, Shirley, NY 11967, USA