

## Recombinant Human EGFLAM Protein, GST-tagged

**Cat. No.** EGFLAM-4330H    **Lot. No.** (See product label)

### SPECIFICATION

<b>Product Overview</b>	Human FLJ39155 full-length ORF ( NP_877953.1, 1 a.a. - 152 a.a.) recombinant protein with GST-tag at N-terminal.
<b>Species</b>	Human
<b>Source</b>	Wheat Germ
<b>Description</b>	EGFLAM (EGF Like, Fibronectin Type III And Laminin G Domains) is a Protein Coding gene. Diseases associated with EGFLAM include Adiaspiromycosis. GO annotations related to this gene include calcium ion binding and glycosaminoglycan binding. An important paralog of this gene is AGRN.
<b>Molecular Mass</b>	43 kDa
<b>AA Sequence</b>	MRFKTTAKDGLLLWRGDSPMRPNSDFISLGLRDGALVFSYNLGSGVASIMVNGSFN DGRWHRVKAVRDGQSGKITVDDYGARTGKSPGMMRQLNINGALYVGGMKEIALHT NRQYMRGLVGCISHFTLSTDYHISLVEDAVDGKNINTCGAK
<b>Applications</b>	Enzyme-linked Immunoabsorbent Assay Western Blot (Recombinant protein) Antibody Production Protein Array
<b>Notes</b>	Best use within three months from the date of receipt of this protein.

 Tel: 1-631-559-9269    1-516-512-3133

 Email: [info@creative-biomart.com](mailto:info@creative-biomart.com)     Fax: 1-631-938-8127

 45-1 Ramsey Road, Shirley, NY 11967, USA

**Storage** Store at -80 centigrade. Aliquot to avoid repeated freezing and thawing.

**Storage Buffer** 50 mM Tris-HCl, 10 mM reduced Glutathione, pH=8.0 in the elution buffer.

## GENE INFORMATION

**Gene Name** EGFLAM EGF-like, fibronectin type III and laminin G domains [ Homo sapiens ]

**Official Symbol** EGFLAM

**Synonyms** EGFLAM; EGF-like, fibronectin type III and laminin G domains; pikachurin; AGRINL; AGRNL; FLJ39155; agrin-like protein; EGF-like, fibronectin type-III and laminin G-like domain-containing protein;

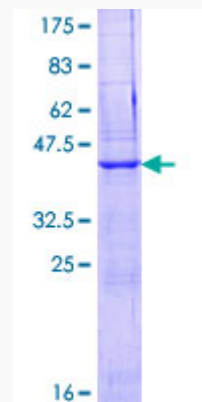
**Gene ID** 133584

**mRNA Refseq** NM\_001205301

**Protein Refseq** NP\_001192230

**UniProt ID** Q63HQ2

**Quality Control Testing**



 Tel: 1-631-559-9269 1-516-512-3133

 Email: [info@creative-biomart.com](mailto:info@creative-biomart.com)  Fax: 1-631-938-8127

 45-1 Ramsey Road, Shirley, NY 11967, USA



12.5% SDS-PAGE Stained with Coomassie Blue.

 Tel: 1-631-559-9269 1-516-512-3133

 Email: [info@creative-biomart.com](mailto:info@creative-biomart.com)  Fax: 1-631-938-8127

 45-1 Ramsey Road, Shirley, NY 11967, USA