

Recombinant Artificial EGFP (Full Length), His-tagged, Biotinylated

Cat. No. EGFP-17 Lot. No. (See product label)

SPECIFICATION

Product Overview	Recombinant Biotinylated Artificial sequence Enhanced Green Fluorescent protein with a His tag was expressed in HEK293.
Source	HEK293
Form	Lyophilized powder
Molecular Mass	Recombinant protein has a calculated molecular weight of about 30 kDa.
AA Sequence	MVSKGEELFTGVVPILVELDGDVNGHKFSVSGEGEGDATYGKLTLLKFICTTGKLPVP WPTLVTTLTLYGVQCFSRYPDHMKQHDFFKSAMPEGYVQERTIFFKDDGNYKTRAEV KFEGDTLVNRIELKGIDFKEDGNILGHKLEYNYNSHNVYIMADKQKNGIKVNFKIRHNI EDGSVQLADHYQQNTPIGDGPVLLPDNHYLSTQSALS KDPNEKRDHMLLEFVTAAGITLGMDELYK
Endotoxin	Not determined
Purity	>95%
Applications	Functional Assay, Protein-protein Interaction, Post-translational Modifications, ELISA, EIA, Western Blotting, Dot Blotting, Immunoprecipitation, Protein Array, etc.
Notes	This product is furnished for LABORATORY RESEARCH USE ONLY. Not for diagnostic or therapeutic use.

 Tel: 1-631-559-9269 1-516-512-3133

 Email: info@creative-biomart.com  Fax: 1-631-938-8127

 45-1 Ramsey Road, Shirley, NY 11967, USA

Storage Upon arrival, the lyophilized protein may be stored for 2 weeks at 4 centigrade. For long term storage, it is recommended to store desiccated below -20 centigrade in a manual defrost freezer. Following reconstitution, the protein may be stored for 2 weeks under sterile conditions at -20 centigrade. For long term storage, it is recommended to make appropriate aliquots and store at -80 centigrade. Avoid repeated freeze-thaw cycles.

Storage Buffer Lyophilized from a 0.2 µm filtered solution in PBS

Reconstitution Briefly spin the vial and bring the contents to the bottom prior to opening. It is recommended to reconstitute at 0.5-1 mg/mL with sterile deionized water.

Shipping Ice packs

Conjugation Biotin

GENE INFORMATION

Official Symbol EGFP

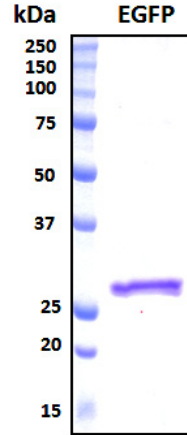
Synonyms Enhanced green fluorescent protein; EGFP

 Tel: 1-631-559-9269 1-516-512-3133

 Email: info@creative-biomart.com  Fax: 1-631-938-8127

 45-1 Ramsey Road, Shirley, NY 11967, USA

SDS-PAGE



 Tel: 1-631-559-9269 1-516-512-3133

 Email: info@creative-biomart.com  Fax: 1-631-938-8127

 45-1 Ramsey Road, Shirley, NY 11967, USA