

Recombinant Human EGFR Protein (Leu25-Val30Gly, Asn298-Ser645), C-Fc tagged

Cat. No. EGFR-2044H Lot. No. (See product label)

SPECIFICATION

Product Overview	Recombinant Human EGFR Protein (25-645aa, Val30Gly mutation, Asn298 deletion), was expressed in Mammalian cells with C-terminal Fc tag.
Species	Human
Source	Mammalian Cells
ProteinLength	25-645 aa
Form	Lyophilized powder/frozen liquid
Molecular Mass	64.05 kDa
Purity	>90% as determined by SDS-PAGE
Notes	For research use only.
Storage	Use a manual defrost freezer and avoid repeated freeze thaw cycles. Store at 2 to 8 centigrade for one week. Store at -20 to -80 centigrade for twelve months from the date of receipt.
Storage Buffer	Supplied as solution form in PBS or lyophilized from PBS.
Reconstitution	Reconstitute in sterile water for a stock solution.

 Tel: 1-631-559-9269 1-516-512-3133

 Email: info@creative-biomart.com  Fax: 1-631-938-8127

 45-1 Ramsey Road, Shirley, NY 11967, USA

Shipping They are shipped out with dry ice/blue ice unless customers require otherwise.

GENE INFORMATION

Gene Name EGFR epidermal growth factor receptor [Homo sapiens (human)]

Official Symbol EGFR

Synonyms EGFR; epidermal growth factor receptor; epidermal growth factor receptor (avian erythroblastic leukemia viral (v erb b) oncogene homolog), ERBB; ERBB1; erythroblastic leukemia viral (v erb b) oncogene homolog (avian); proto-oncogene c-ErbB-1; cell growth inhibiting protein 40; cell proliferation-inducing protein 61; receptor tyrosine-protein kinase erbB-1; avian erythroblastic leukemia viral (v-erb-b) oncogene homolog; ERBB; HER1; mENA; PIG61;

Gene ID 1956

mRNA Refseq NM_005228

Protein Refseq NP_005219

MIM 131550

UniProt ID P00533

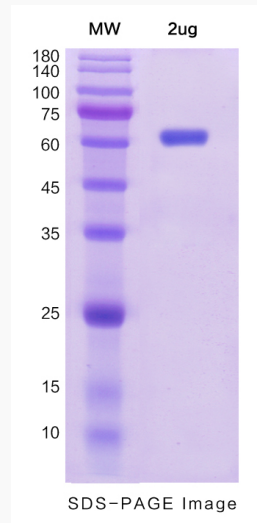
 Tel: 1-631-559-9269 1-516-512-3133

 Email: info@creative-biomart.com  Fax: 1-631-938-8127

 45-1 Ramsey Road, Shirley, NY 11967, USA



SDS-PAGE



Tel: 1-631-559-9269 1-516-512-3133

Email: info@creative-biomart.com Fax: 1-631-938-8127

45-1 Ramsey Road, Shirley, NY 11967, USA