

Active Recombinant Human EGFR protein, His&GST-tagged

Cat. No. EGFR-31H Lot. No. (See product label)

SPECIFICATION

Product Overview	Active Recombinant Human EGFR protein(Met 668-Ala 1210)(NP_005219) was expressed in Insect Cells, fused with the N-terminal polyhistidine-tagged GST tag at the N-terminus.
Species	Human
Source	Insect Cells
ProteinLength	668-1210 aa
Form	Supplied as sterile 50mM Tris,150mM NaCl, 25%glycerol0.02%Triton X-100,0.4mM β -Mercaptoethanol,pH 7.5.
Bio-activity	The specific activity was determined to be 105 nmol/min/mg using Poly(Glu:Tyr) 4:1 as substrate.
Molecular Mass	The recombinant human EGFR /GST chimera consists of 780 amino acids and has a calculated molecular mass of 89.1 kDa.
Endotoxin	< 1.0 EU per μ g of the protein as determined by the LAL method.
Purity	> 85 % as determined by SDS-PAGE
Storage	Store it under sterile conditions at -20°C to -80°C upon receiving. Recommend to aliquot the protein into smaller quantities for optimal storage. Avoid repeated freeze-

 Tel: 1-631-559-9269 1-516-512-3133

 Email: info@creative-biomart.com  Fax: 1-631-938-8127

 45-1 Ramsey Road, Shirley, NY 11967, USA

thaw cycles.

Concentration 0.2-1.0 mg/mL.

GENE INFORMATION

Gene Name EGFR epidermal growth factor receptor [Homo sapiens]

Official Symbol EGFR

Synonyms

EGFR; epidermal growth factor receptor; epidermal growth factor receptor (avian erythroblastic leukemia viral (v erb b) oncogene homolog), ERBB; ERBB1; erythroblastic leukemia viral (v erb b) oncogene homolog (avian); proto-oncogene c-ErbB-1; cell growth inhibiting protein 40; cell proliferation-inducing protein 61; receptor tyrosine-protein kinase erbB-1; avian erythroblastic leukemia viral (v-erb-b) oncogene homolog; ERBB; HER1; mENA; PIG61;

Gene ID 1956

mRNA Refseq NM_005228

Protein Refseq NP_005219

MIM 131550

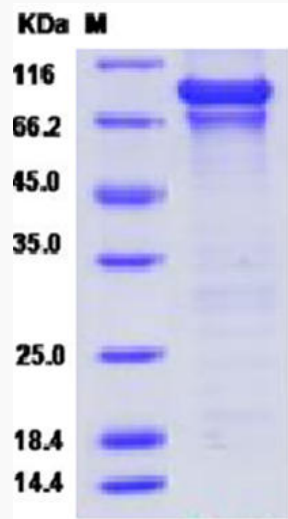
UniProt ID P00533

 Tel: 1-631-559-9269 1-516-512-3133

 Email: info@creative-biomart.com  Fax: 1-631-938-8127

 45-1 Ramsey Road, Shirley, NY 11967, USA

SDS-PAGE



 Tel: 1-631-559-9269 1-516-512-3133

 Email: info@creative-biomart.com  Fax: 1-631-938-8127

 45-1 Ramsey Road, Shirley, NY 11967, USA