

Active Recombinant Human EGFR Protein (Leu 25 - Ser 645), His-tagged, low endotoxin

Cat. No. EGFR-338H Lot. No. (See product label)

SPECIFICATION

| | |
|-------------------------|---|
| Product Overview | Recombinant Human EGFR Protein (P00533-1, 25-645aa, low endotoxin), was expressed in human 293 cells (HEK293) with C-terminal His tag. |
| Species | Human |
| Source | HEK293 |
| ProteinLength | 25-645 aa |
| Form | Lyophilized from 0.22 µm filtered solution in PBS, pH7.4. Normally trehalose is added as protectant before lyophilization. |
| Bio-activity | <p>Immobilized Cetuximab at 2 µg/mL (100 µL/well) can bind Recombinant Human EGFR Protein, His-tagged, low endotoxin with a linear range of 0.8-6 ng/mL (QC tested).</p> <p>Immobilized Erbitux on CM5 Chip via anti-human Fc IgG, can bind Recombinant Human EGFR Protein, His-tagged, low endotoxin with an affinity constant of 0.492 nM as determined in SPR assay (Biacore T200) (Routinely tested).</p> |
| Molecular Mass | 70.5kDa |
| Endotoxin | Less than 0.01 EU per µg by the LAL method. |
| Purity | >95% as determined by SDS-PAGE. |

 Tel: 1-631-559-9269 1-516-512-3133

 Email: info@creative-biomart.com  Fax: 1-631-938-8127

 45-1 Ramsey Road, Shirley, NY 11967, USA

| | |
|-----------------------|--|
| Notes | Please avoid repeated freeze-thaw cycles. |
| Stability | No activity loss is observed after storage at: 4-8 centigrade for 12 months in lyophilized state; -70 centigrade for 3 months under sterile conditions after reconstitution. |
| Storage | For long term storage, the product should be stored at lyophilized state at -20 centigrade or lower. |
| Reconstitution | It is recommended that sterile water be added to the vial to prepare a stock solution of 0.2 mg/ml. Centrifuge the vial at 4 centigrade before opening to recover the entire contents. |

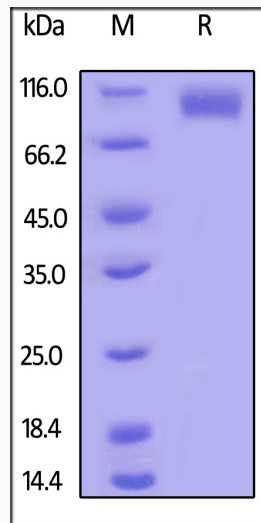
GENE INFORMATION


| | |
|------------------------|---|
| Gene Name | EGFR epidermal growth factor receptor [Homo sapiens] |
| Official Symbol | EGFR |
| Synonyms | EGFR; epidermal growth factor receptor; ERBB1; ERBB; HER1; mENA; PIG61; |
| Gene ID | 1956 |
| mRNA Refseq | NM_005228 |
| Protein Refseq | NP_005219 |
| MIM | 131550 |
| UniProt ID | P00533 |

 Tel: 1-631-559-9269 1-516-512-3133


 Email: info@creative-biomart.com  Fax: 1-631-938-8127

 45-1 Ramsey Road, Shirley, NY 11967, USA



 Tel: 1-631-559-9269 1-516-512-3133

 Email: info@creative-biomart.com  Fax: 1-631-938-8127

 45-1 Ramsey Road, Shirley, NY 11967, USA