

Recombinant Human EGFR protein, hFc-tagged

Cat. No. EGFR-339H Lot. No. (See product label)

SPECIFICATION

Product Overview	Recombinant Human EGFR Protein (P00533, 25-645aa), was expressed in HEK293 with C-terminal hFc tag.
Species	Human
Source	HEK293
ProteinLength	25-645 aa
Tag	C-hFc
Form	Lyophilized from 0.22µm filtered solution in PBS (pH 7.4). Normally 5% trehalose is added as protectant before lyophilization.
Bio-activity	Immobilized Human EGF, No Tag at 5 µg/ml (100 µl/well) on the plate. Dose response curve for Human EGFR, hFc Tag with the EC50 of 0.44 µg/ml determined by ELISA.
Molecular Mass	The protein has a predicted MW of 95.2 kDa. Due to glycosylation, the protein migrates to 140-160 kDa based on Tris-Bis PAGE result.
Endotoxin	Less than 1EU per µg by the LAL method.
Purity	> 95% as determined by Tris-Bis PAGE; > 95% as determined by HPLC

 Tel: 1-631-559-9269 1-516-512-3133

 Email: info@creative-biomart.com  Fax: 1-631-938-8127

 45-1 Ramsey Road, Shirley, NY 11967, USA

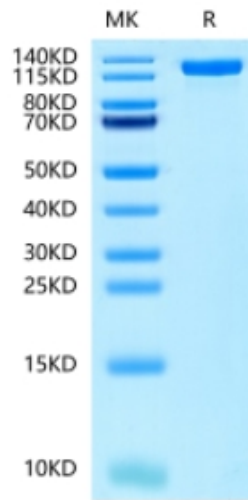
Storage	Reconstituted protein stable at -80°C for 12 months, 4°C for 1 week. Use a manual defrost freezer and avoid repeated freeze-thaw cycles.
Reconstitution	Centrifuge tubes before opening. Reconstituting to a concentration more than 100 µg/ml is recommended. Dissolve the lyophilized protein in distilled water.
GENE INFORMATION	
Gene Name	EGFR epidermal growth factor receptor [Homo sapiens]
Official Symbol	EGFR
Synonyms	EGFR; epidermal growth factor receptor; epidermal growth factor receptor (avian erythroblastic leukemia viral (v erb b) oncogene homolog) , ERBB; ERBB1; erythroblastic leukemia viral (v erb b) oncogene homolog (avian); proto-oncogene c-ErbB-1; cell growth inhibiting protein 40; cell proliferation-inducing protein 61; receptor tyrosine-protein kinase erbB-1; avian erythroblastic leukemia viral (v-erb-b) oncogene homolog; ERBB; HER1; mENA; PIG61;
Gene ID	1956
mRNA Refseq	NM_005228
Protein Refseq	NP_005219
MIM	131550
UniProt ID	P00533

 Tel: 1-631-559-9269 1-516-512-3133

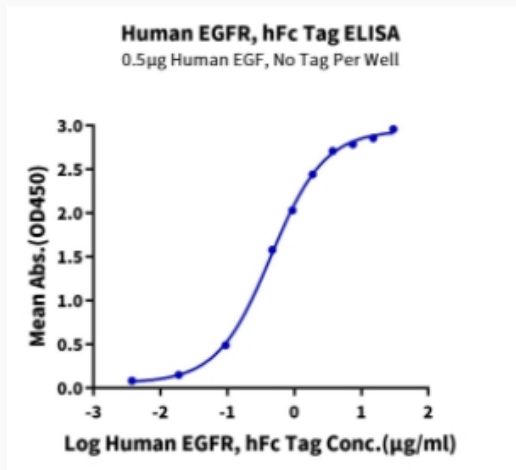
 Email: info@creative-biomart.com  Fax: 1-631-938-8127

 45-1 Ramsey Road, Shirley, NY 11967, USA

Tris-Bis PAGE



ELISA Data



 Tel: 1-631-559-9269 1-516-512-3133

 Email: info@creative-biomart.com  Fax: 1-631-938-8127

 45-1 Ramsey Road, Shirley, NY 11967, USA