

## Recombinant Human EGFR protein, His-Avi-tagged

Cat. No. EGFR-5723H Lot. No. (See product label)

### SPECIFICATION

<b>Product Overview</b>	Recombinant Human EGFR Protein (NP_001333870.1, 25-378aa), was expressed in HEK293 with C-terminal His tag and Avi tag.
<b>Species</b>	Human
<b>Source</b>	HEK293
<b>ProteinLength</b>	25-378 aa
<b>Tag</b>	C-His-Avi
<b>Form</b>	Lyophilized from 0.22µm filtered solution in PBS (pH 7.4). Normally 5% trehalose is added as protectant before lyophilization.
<b>Bio-activity</b>	Immobilized Human EGFRVIII, His Tag at 1ug/ml (100ul/Well) on the plate. Dose response curve for Anti-EGFRVIII Antibody, hFc Tag with the EC50 of 9.6ng/ml determined by ELISA.
<b>Molecular Mass</b>	The protein has a predicted MW of 41.6 kDa. Due to glycosylation, the protein migrates to 68-80 kDa based on Tris-Bis PAGE result.
<b>Endotoxin</b>	Less than 1EU per µg by the LAL method.
<b>Purity</b>	> 95% as determined by Tris-Bis PAGE;> 95% as determined by HPLC

 Tel: 1-631-559-9269 1-516-512-3133

 Email: [info@creative-biomart.com](mailto:info@creative-biomart.com)  Fax: 1-631-938-8127

 45-1 Ramsey Road, Shirley, NY 11967, USA

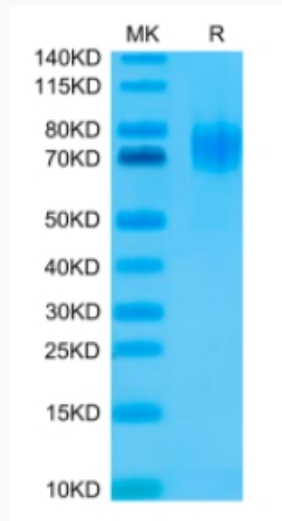
<b>Storage</b>	Reconstituted protein stable at -80°C for 12 months, 4°C for 1 week. Use a manual defrost freezer and avoid repeated freeze-thaw cycles.
<b>Reconstitution</b>	Centrifuge tubes before opening. Reconstituting to a concentration more than 100 µg/ml is recommended. Dissolve the lyophilized protein in distilled water.
<b>GENE INFORMATION</b>	
<b>Gene Name</b>	EGFR epidermal growth factor receptor [ Homo sapiens ]
<b>Official Symbol</b>	EGFR
<b>Synonyms</b>	EGFR; epidermal growth factor receptor; epidermal growth factor receptor (avian erythroblastic leukemia viral (v erb b) oncogene homolog) , ERBB; ERBB1; erythroblastic leukemia viral (v erb b) oncogene homolog (avian); proto-oncogene c-ErbB-1; cell growth inhibiting protein 40; cell proliferation-inducing protein 61; receptor tyrosine-protein kinase erbB-1; avian erythroblastic leukemia viral (v-erb-b) oncogene homolog; ERBB; HER1; mENA; PIG61;
<b>Gene ID</b>	1956
<b>mRNA Refseq</b>	NM_005228
<b>Protein Refseq</b>	NP_005219
<b>MIM</b>	131550
<b>UniProt ID</b>	P00533

 Tel: 1-631-559-9269 1-516-512-3133

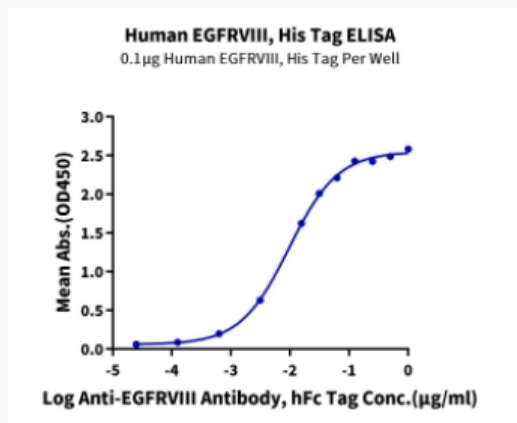
 Email: [info@creative-biomart.com](mailto:info@creative-biomart.com)  Fax: 1-631-938-8127

 45-1 Ramsey Road, Shirley, NY 11967, USA

**Tris-Bis PAGE**



**ELISA Data**



 Tel: 1-631-559-9269 1-516-512-3133

 Email: [info@creative-biomart.com](mailto:info@creative-biomart.com)  Fax: 1-631-938-8127

 45-1 Ramsey Road, Shirley, NY 11967, USA