

Recombinant Human EGFRviii protein, His-Avi-tagged

Cat. No. EGFR-688H Lot. No. (See product label)

SPECIFICATION

Product Overview	Recombinant Human EGFR vIII Protein (25-645aa, 30-297aa: Val Cys Gln...Cys Pro Arg → Gly mutation), was expressed in mammalian system with N-terminal 6-His tag and Avi tag.
Species	Human
Source	HEK293
ProteinLength	25-645 aa
Description	The epidermal growth factor receptor (EGFR) is overexpressed in a variety of human epithelial tumors, often as a consequence of gene amplification. Tumors with EGFR gene amplification frequently contain EGFR gene rearrangements, with the most common extracellular domain mutation being EGFRvIII. This mutation leads to a deletion of exons 2-7 of the EGFR gene and renders the mutant receptor incapable of binding any known ligand.
Form	Supplied as 0.22um filtered solution in PBS (pH 7.4).
Molecular Mass	The protein has a predicted MW of 41.6 kDa .As a result of glycosylation, the protein migrates as 65-80 kDa under reducing (R) condition (Bis-Tris PAGE).
Endotoxin	Less than 0.05 EU per ug by the LAL method.
Purity	> 95% as determined by Bis-Tris PAGE; > 95% as determined by HPLC

 Tel: 1-631-559-9269 1-516-512-3133

 Email: info@creative-biomart.com  Fax: 1-631-938-8127

 45-1 Ramsey Road, Shirley, NY 11967, USA

Storage The product should be stored at -70°C. Please do not repeated freeze-thaw cycles.

Reconstitution It is recommended that sterile water be added to the vial to prepare a stock solution of 0.2 ug/ul. Centrifuge the vial at 4°C before opening to recover the entire contents.

GENE INFORMATION

Gene Name EGFR epidermal growth factor receptor [Homo sapiens]

Official Symbol EGFR

Synonyms EGFRvIII,EGFR

Gene ID 1956

mRNA Refseq NM_005228

Protein Refseq NP_005219

MIM 131550

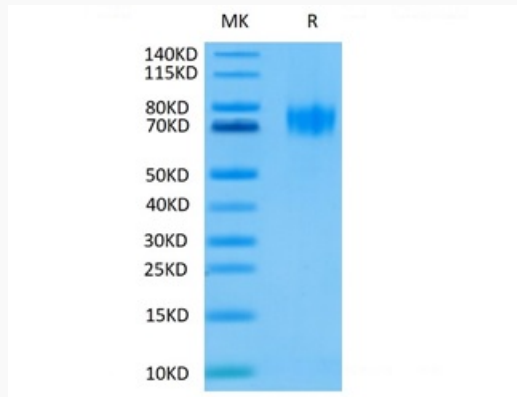
UniProt ID P00533

 Tel: 1-631-559-9269 1-516-512-3133

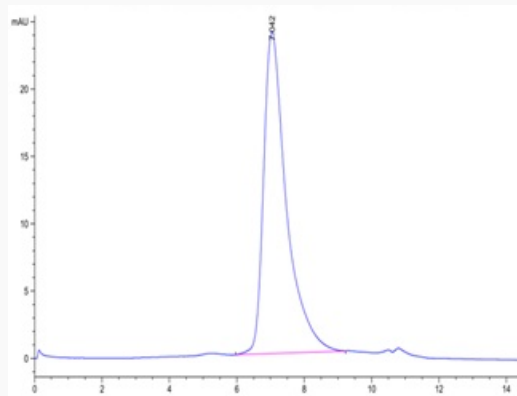
 Email: info@creative-biomart.com  Fax: 1-631-938-8127

 45-1 Ramsey Road, Shirley, NY 11967, USA

Tris-Bis PAGE



HPLC data

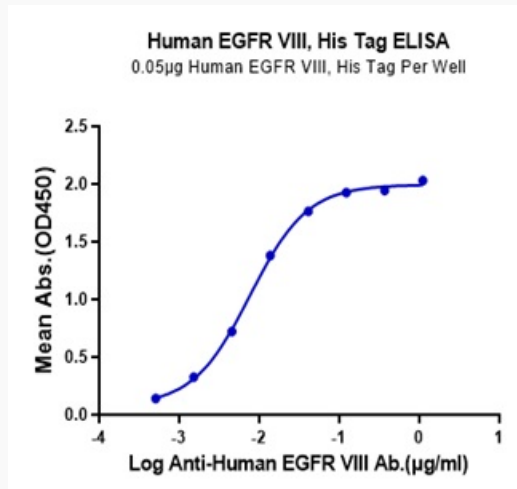


 Tel: 1-631-559-9269 1-516-512-3133

 Email: info@creative-biomart.com  Fax: 1-631-938-8127

 45-1 Ramsey Road, Shirley, NY 11967, USA

ELISA data



 Tel: 1-631-559-9269 1-516-512-3133

 Email: info@creative-biomart.com  Fax: 1-631-938-8127

 45-1 Ramsey Road, Shirley, NY 11967, USA