

Recombinant Human Epidermal Growth Factor Receptor, Strep-tagged

Cat. No. EGFR-893H **Lot. No.** (See product label)

SPECIFICATION

Product Overview	The EGFR contains the extracellular domain of the human EGFR (25-647 a.a.) excluding the signal peptide which is cleaved by the insect cells having an approximate Mw of 80kDa. The EGFR is fused to a C-terminal Strep-tag and purified by proprietary chromatographic techniques.
Species	Human
Source	Human
ProteinLength	25-647 a.a.
Description	The epidermal growth factor receptor (EGF R) subfamily of receptor tyrosine kinases comprises four members: EGF R (also known as HER1, ErbB1 or ErbB), ErbB2 (Neu, HER-2), ErbB3 (HER-3), and ErbB4 (HER-4).
Form	ErbB1 was lyophilized from a concentrated (1mg/ml) sterile solution containing 1x PBS pH=7.4.
Purity	Greater than 90.0% as determined by SDS-PAGE.
Physical Appearance	Sterile Filtered White lyophilized (freeze-dried) powder.
Solubility	It is recommended to reconstitute the lyophilized EGFR in sterile PBS not less than 100g/ml, which can then be further diluted to other aqueous solutions.

 Tel: 1-631-559-9269 1-516-512-3133

 Email: info@creative-biomart.com  Fax: 1-631-938-8127

 45-1 Ramsey Road, Shirley, NY 11967, USA

Amino acid sequence

LEEKKV CQGTSNKLTQ LGTFEDHFLS LQRMFNNCEV VLG NLEITYV
 QRNYDLSFLK TIQEVAGYVL IALN TVERIP LENLQIIRGN MYYENSYALA
 VLSNYDANKT GLKELPMRNL QEILHGAVRF SNNPALCNVE SIQWRDIVSS
 DFLSNMSMDF QNHLGSCQKC DPSPNGSCW GAGEENCQKL TKIICAQQCS
 GRCRGKSPSD CCHNQCAAGC TGPRES DCLV CRKFRDEATC KDTCPPLMLY
 NPTTYQMDVN PEGKYSGFAT CVKKCPRNYV VTDHGSCVRA CGADSYEMEE
 DGVRKCKKCE GPCRKVCNGI GIGEFKDSLS INATNIKHFK NCTSISGDLH
 ILPVAFRGDS FTHTPPLDPQ ELDILKTVKE ITGFLLIQAW PENRTDLHAF
 ENLEIIRGRT KQHGQFSLAV VSLNITSLGL RSLKEISDGD VIISGNKNLC
 YANTINWKKL FGTSGQKTKI ISNRGENSCK ATGQVCHALC SPEGCWGPPEP
 RDCVSCRNVS RGRECVDKCK LLEGEPREFV ENSECIQCHP ECLPQAMNIT
 CTGRGPDNCI QCAHYIDGPH CVKTC PAVGM GENNTLVWKY ADAGHVCHLC
 HPNCTYGCTG PGLEGCP TNG PKIPSIA + Strep-tag

Storage

Lyophilized EGFR although stable at room temperature for 3 weeks, should be stored desiccated below -18°C. Upon reconstitution EGFR should be stored at 4°C between 2-7 days and for future use below -18°C. For long term storage it is recommended to add a carrier protein (0.1% HSA or BSA). Please prevent freeze-thaw cycles.

GENE INFORMATION

Gene Name

EGFR epidermal growth factor receptor [*Homo sapiens*]

Official Symbol

EGFR

Synonyms

EGFR; epidermal growth factor receptor; ERBB; ERBB1; mENA; HER1; PIG61;
 Receptor tyrosine-protein kinase erB-1; Proto-oncogene c-ErbB-1; epidermal growth factor receptor (avian erythroblastic leukemia viral (v-erb-b) oncogene homolog); OTTHUMP00000209210; cell growth inhibiting protein 40; epidermal growth factor receptor (erythroblastic leukemia viral (v-erb-b) oncogene homolog, avian); cell

 Tel: 1-631-559-9269 1-516-512-3133

 Email: info@creative-biomart.com
 Fax: 1-631-938-8127

 45-1 Ramsey Road, Shirley, NY 11967, USA

proliferation-inducing protein 61; avian erythroblastic leukemia viral (v-erb-b) oncogene homolog; erythroblastic leukemia viral (v-erb-b) oncogene homolog; EC. 2.7.10.1

Gene ID [1956](#)

mRNA Refseq [NM_005228](#)

Protein Refseq [NP_005219](#)

MIM [131550](#)

UniProt ID [Q9GZX1](#)

Chromosome Location 7p12

Function ATP binding; MAP/ERK kinase kinase activity; actin filament binding; double-stranded DNA binding; epidermal growth factor receptor activity; identical protein binding; contributes to nitric-oxide synthase regulator activity; nucleotide binding; protein binding; protein heterodimerization activity; protein phosphatase binding; protein tyrosine kinase activity; receptor signaling protein tyrosine kinase activity; transferase activity; transmembrane receptor activity

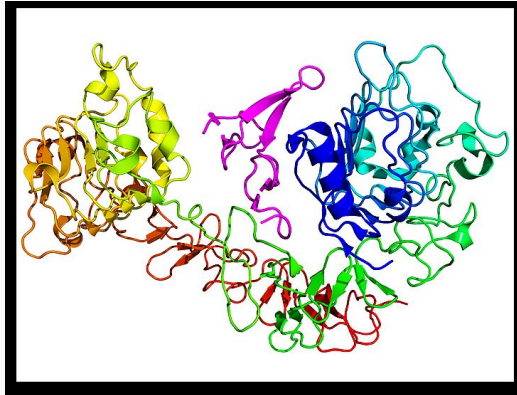
 Tel: 1-631-559-9269 1-516-512-3133

 Email: info@creative-biomart.com  Fax: 1-631-938-8127

 45-1 Ramsey Road, Shirley, NY 11967, USA



PDB rendering based
on 1NQL



Tel: 1-631-559-9269 1-516-512-3133

Email: info@creative-biomart.com Fax: 1-631-938-8127

45-1 Ramsey Road, Shirley, NY 11967, USA