

## Recombinant Human EGR1 Protein (444-543 aa), His-tagged

Cat. No. EGR1-1384H Lot. No. (See product label)

### SPECIFICATION

<b>Product Overview</b>	Recombinant Human EGR1 Protein (444-543 aa) is produced by Yeast expression system. This protein is fused with a 6xHis tag at the N-terminal. Research Area: Transcription. Protein Description: Partial.
<b>Species</b>	Human
<b>Source</b>	Yeast
<b>ProteinLength</b>	444-543 aa
<b>Description</b>	Transcriptional regulator. Recognizes and binds to the DNA sequence 5'-CGCCCCCGC-3'(EGR-site). Activates the transcription of target genes whose products are required for mitogenesis and differentiation.
<b>Form</b>	Tris-based buffer,50% glycerol
<b>Molecular Mass</b>	12.1 kDa
<b>AA Sequence</b>	SPVATSYSPVTTSYSPATTSYSPVPTSFSSPGSSTYSPVHSGFPSPSVATTYS SVPPAFPAQVSSFPSSAVTNSFSASTGLSDMTATFSPRTIEIC
<b>Purity</b>	> 90% as determined by SDS-PAGE.
<b>Notes</b>	Repeated freezing and thawing is not recommended. Store working aliquots at 4 centigrade for up to one week.

 Tel: 1-631-559-9269 1-516-512-3133

 Email: [info@creative-biomart.com](mailto:info@creative-biomart.com)  Fax: 1-631-938-8127

 45-1 Ramsey Road, Shirley, NY 11967, USA

**Storage** The shelf life is related to many factors, storage state, buffer ingredients, storage temperature and the stability of the protein itself. Generally, the shelf life of liquid form is 6 months at -20 centigrade/-80 centigrade. The shelf life of lyophilized form is 12 months at -20 centigrade/-80 centigrade.

**Concentration** A hardcopy of COA with reconstitution instruction is sent along with the products.

## GENE INFORMATION

**Gene Name** EGR1 early growth response 1 [ Homo sapiens ]

**Official Symbol** EGR1

**Synonyms** EGR1; AT225; G0S30; KROX 24; NGFI A; TIS8; ZIF 268; ZNF225; EGR-1; NGFI-A; KROX-24; ZIF-268;

**Gene ID** 1958

**mRNA Refseq** NM\_001964

**Protein Refseq** NP\_001955

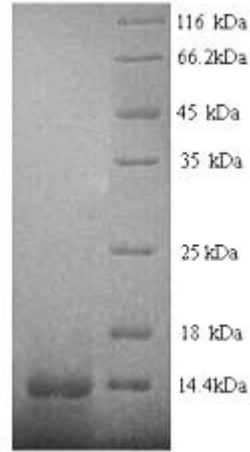
**MIM** 128990

**UniProt ID** P18146

 Tel: 1-631-559-9269 1-516-512-3133

 Email: [info@creative-biomart.com](mailto:info@creative-biomart.com)  Fax: 1-631-938-8127

 45-1 Ramsey Road, Shirley, NY 11967, USA



(Tris-Glycine gel) Discontinuous SDS-PAGE (reduced) with 5% enrichment gel and 15% separation gel.

 Tel: 1-631-559-9269 1-516-512-3133

 Email: [info@creative-biomart.com](mailto:info@creative-biomart.com)  Fax: 1-631-938-8127

 45-1 Ramsey Road, Shirley, NY 11967, USA