

## Recombinant Human EGR1 Protein, His-tagged

Cat. No. EGR1-628H Lot. No. (See product label)

### SPECIFICATION

<b>Product Overview</b>	Recombinant Human EGR1(Gln282~Ser433) fused with His tag at N-terminal was expressed in E. coli.
<b>Species</b>	Human
<b>Source</b>	E.coli
<b>ProteinLength</b>	Gln282~Ser433
<b>Description</b>	The protein encoded by this gene belongs to the EGR family of C2H2-type zinc-finger proteins. It is a nuclear protein and functions as a transcriptional regulator. The products of target genes it activates are required for differentiation and mitogenesis. Studies suggest this is a cancer suppressor gene.
<b>Form</b>	20mM Tris, 150mM NaCl,pH8.0, containing 1mM EDTA, 1mM DTT, 0.01% SKL, 5% Trehalose and Proclin300.
<b>Molecular Mass</b>	21.4kDa
<b>Identity</b>	Reconstitute in 20mM Tris, 150mM NaCl (pH8.0) to a concentration of 0.1-1.0 mg/mL. Do not vortex.
<b>Endotoxin</b>	<1.0EU per 1g (determined by the LAL method)
<b>Purity</b>	> 97%

 Tel: 1-631-559-9269 1-516-512-3133

 Email: [info@creative-biomart.com](mailto:info@creative-biomart.com)  Fax: 1-631-938-8127

 45-1 Ramsey Road, Shirley, NY 11967, USA

<b>Applications</b>	Positive Control; Immunogen; SDS-PAGE; WB. If bio-activity of the protein is needed, please check active protein
<b>Stability</b>	The thermal stability is described by the loss rate. The loss rate was determined by accelerated thermal degradation test, that is, incubate the protein at 37 centigrade for 48h, and no obvious degradation and precipitation were observed. The loss rate is less than 5% within the expiration date under appropriate storage condition.
<b>Storage</b>	Avoid repeated freeze/thaw cycles. Store at 2-8 centigrade for one month. Aliquot and store at -80 centigrade for 12 months.
<b>Reconstitution</b>	Reconstitute in PBS or others

## GENE INFORMATION

<b>Gene Name</b>	<a href="#">EGR1 early growth response 1 [ Homo sapiens ]</a>
<b>Official Symbol</b>	<a href="#">EGR1</a>
<b>Synonyms</b>	EGR1; early growth response 1; early growth response protein 1; AT225; G0S30; KROX 24; nerve growth factor induced protein A; NGFI A; TIS8; transcription factor ETR103; ZIF 268; zinc finger protein 225; ZNF225; EGR-1; transcription factor Zif268; zinc finger protein Krox-24; nerve growth factor-induced protein A; NGFI-A; KROX-24; ZIF-268;
<b>Gene ID</b>	<a href="#">1958</a>
<b>mRNA Refseq</b>	<a href="#">NM_001964</a>
<b>Protein Refseq</b>	<a href="#">NP_001955</a>

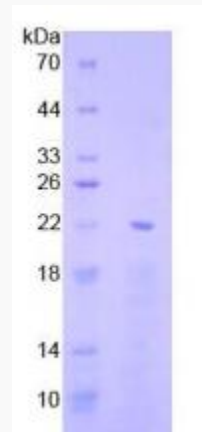
 Tel: 1-631-559-9269 1-516-512-3133

 Email: [info@creative-biomart.com](mailto:info@creative-biomart.com)  Fax: 1-631-938-8127

 45-1 Ramsey Road, Shirley, NY 11967, USA

MIM 128990

UniProt ID P18146



Tel: 1-631-559-9269 1-516-512-3133

Email: [info@creative-biomart.com](mailto:info@creative-biomart.com) Fax: 1-631-938-8127

45-1 Ramsey Road, Shirley, NY 11967, USA