

Recombinant Full Length Human EHD1 Protein, C-Flag-tagged

Cat. No. EHD1-1494HFL Lot. No. (See product label)

SPECIFICATION

Product Overview	Recombinant Full Length Human EHD1 Protein, fused to Flag-tag at C-terminus, was expressed in Mammalian cells.
Species	Human
Source	Mammalian Cells
Description	This gene belongs to a highly conserved gene family encoding EPS15 homology (EH) domain-containing proteins. The protein-binding EH domain was first noted in EPS15, a substrate for the epidermal growth factor receptor. The EH domain has been shown to be an important motif in proteins involved in protein-protein interactions and in intracellular sorting. The protein encoded by this gene is thought to play a role in the endocytosis of IGF1 receptors. Alternatively spliced transcript variants have been found for this gene.
Form	25 mM Tris HCl, pH 7.3, 100 mM glycine, 10% glycerol.
Molecular Mass	60.4 kDa
AA Sequence	MFSWVSKDARRKKEPELFQTVAEGLRQLYAQKLLPLEEHYRFHEFHSPALEDADFD NKPMVLLVGQYSTG KTFIRHLIEQDFPGMRIGPEPTTDSFIAMVHGPTEGVVPGNA LVVDPRRPFRKLNAFGNAFLNRFMCAQ LPNPVLDISISIIDTPGILSGEKQRISRGYDF AAVLEWFAERVDRILLFDAHKLDISDEFSEVIKALKNH EDKIRVVLNKADQIETQQLM RVYGALMWSLGGKIINTPEVVRVYIGSFWSHPLLIPDNRKLFEEAEQDLFK DIQSLPRN AALRKLNDLIKRRARLAKVHAYIISLKKEMPVNFVGKESKKKELVNNLGEIYQKIEREHQ

 Tel: 1-631-559-9269 1-516-512-3133

 Email: info@creative-biomart.com  Fax: 1-631-938-8127

 45-1 Ramsey Road, Shirley, NY 11967, USA

ISP GDFPSLRKMQELLQTQDFSKFQALKPKLLDTVDDMLANDIARLMVMVRQEESL
 MPSQVVKGGAFDGTMNG PFGHGYGEGAGEGIDDVEWVVGKDKPTYDEIFYTLSP
 VNGKITGANAKKEMVKSCLPNTVLGKIWKLADV
 DKDGLLDDEEFALANHLIKVKLEGHELPADLPPHLVPPSKRRHESGPTRTRPLEQKLI
 SEEDLAANDILDYKDDDDKV

Purity > 80% as determined by SDS-PAGE and Coomassie blue staining.

Stability Stable for 12 months from the date of receipt of the product under proper storage and handling conditions. Avoid repeated freeze-thaw cycles.

Storage Store at -80 centigrade.

Concentration >50 ug/mL as determined by microplate BCA method.

Preparation Recombinant protein was captured through anti-DDK affinity column followed by conventional chromatography steps.

Protein Families Druggable Genome

Protein Pathways Endocytosis

Full Length Full L.

GENE INFORMATION

Gene Name EHD1 EH domain containing 1 [Homo sapiens (human)]

Official Symbol EHD1

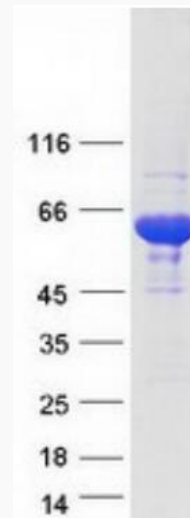
Synonyms PAST; PAST1; H-PAST; HPAST1

 Tel: 1-631-559-9269 1-516-512-3133

 Email: info@creative-biomart.com  Fax: 1-631-938-8127

 45-1 Ramsey Road, Shirley, NY 11967, USA

Gene ID	10938
mRNA Refseq	NM_006795.4
Protein Refseq	NP_006786.2
MIM	605888
UniProt ID	Q9H4M9



Coomassie blue staining of purified EHD1 protein.

Tel: 1-631-559-9269 1-516-512-3133

Email: info@creative-biomart.com Fax: 1-631-938-8127

45-1 Ramsey Road, Shirley, NY 11967, USA