

Recombinant Human EHD1 Protein, Myc/DDK-tagged, C13 and N15-labeled

Cat. No. EHD1-4956H **Lot. No.** (See product label)

SPECIFICATION

Product Overview	EHD1 MS Standard C13 and N15-labeled recombinant protein (NP_006786) with a C-terminal MYC/DDK tag, was expressed in HEK293 cells.
Species	Human
Source	HEK293
Description	This gene belongs to a highly conserved gene family encoding EPS15 homology (EH) domain-containing proteins. The protein-binding EH domain was first noted in EPS15, a substrate for the epidermal growth factor receptor. The EH domain has been shown to be an important motif in proteins involved in protein-protein interactions and in intracellular sorting. The protein encoded by this gene is thought to play a role in the endocytosis of IGF1 receptors. Alternatively spliced transcript variants have been found for this gene.
Molecular Mass	60.6 kDa
AA Sequence	MFSWVSKDARRKKEPELFQTVAEGLRQLYAQKLLPLEEHYRFHEFHSPALEDADFD NKPMVLLVGQYSTGKTTFFIRHLIEQDFPGMRIGPEPTTDSFIAMHGPTEGVVPGNA LVVDPRRPFKLNAFGNFLNRFMCAQLPNPVLDSISIIDTPGILSGEKQRISRGYDF AAVLEWFAERVDRILLFDHAKLDISDEFSEVIKALKNHEDKIRVVLNKADQIETQQLM RVYGALMWSLGKIINTPEVVRVYIGSFWSHPLLIPDNRKLFEEAEQDLFKDIQSLPRN AALRKLNDLIKRRARLAKVHAYIISSLKEMPVFGKESKKKELVNNLGEIYQKIEREHQ

 Tel: 1-631-559-9269 1-516-512-3133

 Email: info@creative-biomart.com  Fax: 1-631-938-8127

 45-1 Ramsey Road, Shirley, NY 11967, USA

ISPGDFPSLRKMQELLQTQDFSKFQALKPKLLDTVDDMLANDIARLMVMVRQEESLM
 PSQVVKGGAFDGTMMNGPFGHGYGEGAGEGIDDVEWVVGKDKPTYDEIFYTLSPVN
 GKITGANAKKEMVKSCLPNTVLGKIWKLADVDKDGLLDDEEFALANHLIKVKLEGHEL
 PADLPPHLVPPSKRRRHESGPTRTRPLEQKLISEEDLAANDILDYKDDDDKV

Purity > 80% as determined by SDS-PAGE and Coomassie blue staining

Stability Stable for 3 months from receipt of products under proper storage and handling conditions.

Storage Store at -80 centigrade. Avoid repeated freeze-thaw cycles.

Concentration 50 µg/mL as determined by BCA

Storage Buffer 100 mM glycine, 25 mM Tris-HCl, pH 7.3.

GENE INFORMATION

Gene Name EHD1 EH-domain containing 1 [Homo sapiens (human)]

Official Symbol EHD1

Synonyms EHD1; EH-domain containing 1; PAST1; EH domain-containing protein 1; FLJ42622; FLJ44618; H PAST; HPAST1; testilin; PAST homolog 1; PAST; H-PAST;

Gene ID 10938

mRNA Refseq NM_006795

Protein Refseq NP_006786

 Tel: 1-631-559-9269 1-516-512-3133

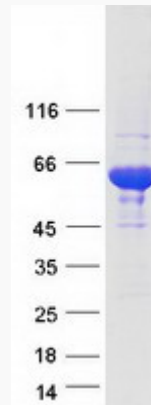
 Email: info@creative-biomart.com  Fax: 1-631-938-8127

 45-1 Ramsey Road, Shirley, NY 11967, USA

MIM 605888


UniProt ID Q9H4M9

SDS-PAGE



 Tel: 1-631-559-9269 1-516-512-3133

 Email: info@creative-biomart.com  Fax: 1-631-938-8127

 45-1 Ramsey Road, Shirley, NY 11967, USA