

Recombinant Human EHMT1 Protein, GST-tagged

Cat. No. EHMT1-006H Lot. No. (See product label)

SPECIFICATION

Product Overview	Recombinant Human EHMT1 protein with a N-terminal GST-tag was expressed in E. coli
Species	Human
Source	E.coli
Description	<p>The protein encoded by this gene is a histone methyltransferase that methylates the lysine-9 position of histone H3. This action marks the genomic region packaged with these methylated histones for transcriptional repression. This protein may be involved in the silencing of MYC- and E2F-responsive genes and therefore could play a role in the G0/G1 cell cycle transition. Defects in this gene are a cause of chromosome 9q subtelomeric deletion syndrome (9q-syndrome, also known as Kleefstra syndrome). Alternative splicing results in multiple transcript variants.</p>
Molecular Mass	60.3 kDa
Purity	≥95% estimated by SDS-PAGE
Unit Definition	One unit is defined as the amount of enzyme required to transfer one methyl group to Histone H3 per minute as determined using 100 μ M Histone H3 (1-21) peptide at 37 centigrade using Methyltransferase Colorimetric Assay Kit.
Stability	≥ 545 days

 Tel: 1-631-559-9269 1-516-512-3133

 Email: info@creative-biomart.com  Fax: 1-631-938-8127

 45-1 Ramsey Road, Shirley, NY 11967, USA

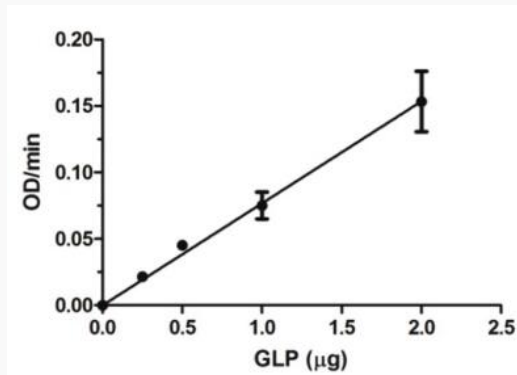
Storage	-80 centigrade
Shipping	Dry ice in continental US, may vary elsewhere.
GENE INFORMATION	
Gene Name	EHMT1 euchromatic histone lysine methyltransferase 1 [Homo sapiens (human)]
Official Symbol	EHMT1
Synonyms	EHMT1; euchromatic histone lysine methyltransferase 1; GLP; GLP1; KMT1D; KLEFS1; FP13812; EHMT1-IT1; EUHMTASE1; Eu-HMTase1; histone-lysine N-methyltransferase EHMT1; EHMT1 intronic transcript 1; G9a-like protein 1; H3-K9-HMTase 5; euchromatic histone-lysine N-methyltransferase 1; histone H3-K9 methyltransferase 5; histone-lysine N-methyltransferase, H3 lysine-9 specific 5; lysine N-methyltransferase 1D; EC 2.1.1.43
Gene ID	79813
mRNA Refseq	NM_024757
Protein Refseq	NP_079033
MIM	607001
UniProt ID	Q9H9B1

 Tel: 1-631-559-9269 1-516-512-3133

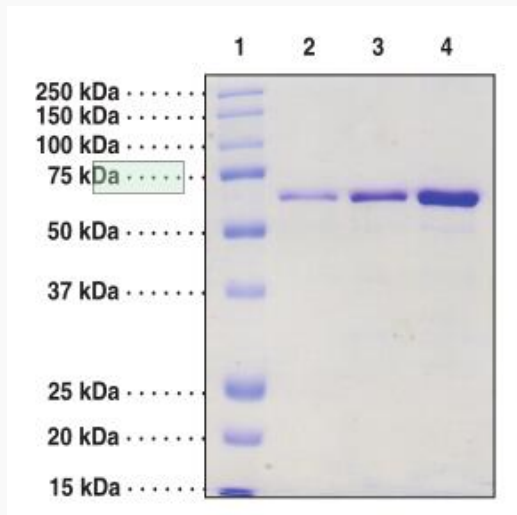
 Email: info@creative-biomart.com  Fax: 1-631-938-8127

 45-1 Ramsey Road, Shirley, NY 11967, USA

EHMT1 enzyme titration



SDS-PAGE analysis of EHMT1.



Lane 1: MW Markers
 Lane 2: GLP (1 g)
 Lane 3: GLP (2 g)
 Lane 4: GLP (5 g)