

Recombinant Human EHMT2 Protein, GST-tagged

Cat. No. EHMT2-014H Lot. No. (See product label)

SPECIFICATION

Product Overview	Recombinant Human EHMT2 protein with a N-terminal GST-tag was expressed in E. coli
Species	Human
Source	E.coli
Description	This gene encodes a methyltransferase that methylates lysine residues of histone H3. Methylation of H3 at lysine 9 by this protein results in recruitment of additional epigenetic regulators and repression of transcription. This gene was initially thought to be two different genes, NG36 and G9a, adjacent to each other in the HLA locus. Alternative splicing results in multiple transcript variants.
Molecular Mass	75.4 kDa
Purity	≥70% estimated by SDS-PAGE
Unit Definition	One unit is defined as the amount of enzyme required to transfer one methyl group to Histone H3 per minute as determined using 200 μM Histone H3 (amino acids 1-21) peptide at 37 centigrade using Methyltransferase Colorimetric Assay Kit.
Stability	≥ 6 months
Storage	-80 centigrade

 Tel: 1-631-559-9269 1-516-512-3133

 Email: info@creative-biomart.com  Fax: 1-631-938-8127

 45-1 Ramsey Road, Shirley, NY 11967, USA

Shipping Dry ice in continental US, may vary elsewhere.

GENE INFORMATION

Gene Name EHMT2 euchromatic histone lysine methyltransferase 2 [Homo sapiens (human)]

Official Symbol EHMT2

Synonyms EHMT2; euchromatic histone lysine methyltransferase 2; G9A; BAT8; GAT8; NG36; KMT1C; C6orf30; histone-lysine N methyltransferase EHMT2; G9A histone methyltransferase; H3-K9-HMTase 3; HLA-B associated transcript 8; ankyrin repeat-containing protein; euchromatic histone-lysine N-methyltransferase 2; histone H3-K9 methyltransferase 3; histone-lysine N methyltransferase, H3 lysine-9 specific 3; lysine N-methyltransferase 1C; EC 2.1.1.43

Gene ID 10919

mRNA Refseq NM_001289413

Protein Refseq NP_001276342

MIM 604599

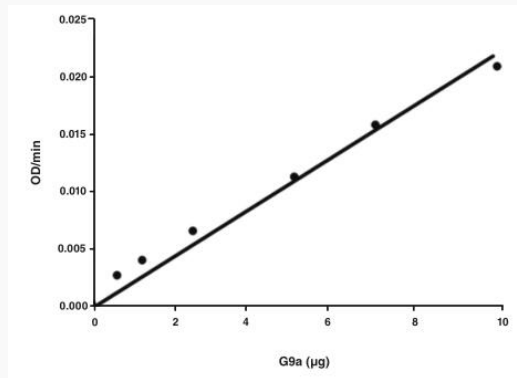
UniProt ID Q96KQ7

 Tel: 1-631-559-9269 1-516-512-3133

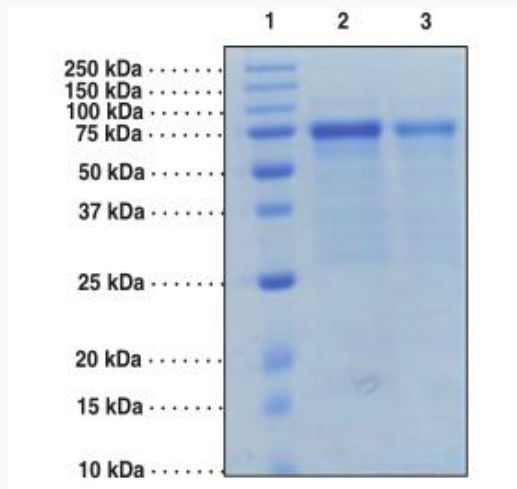
 Email: info@creative-biomart.com  Fax: 1-631-938-8127

 45-1 Ramsey Road, Shirley, NY 11967, USA

Activity of EHMT2



SDS-PAGE analysis of EHMT2



Lane 1: MW Markers

Lane 2: G9a (5 g)

Lane 3: G9a (2.5 g)

 Tel: 1-631-559-9269 1-516-512-3133

 Email: info@creative-biomart.com  Fax: 1-631-938-8127

 45-1 Ramsey Road, Shirley, NY 11967, USA